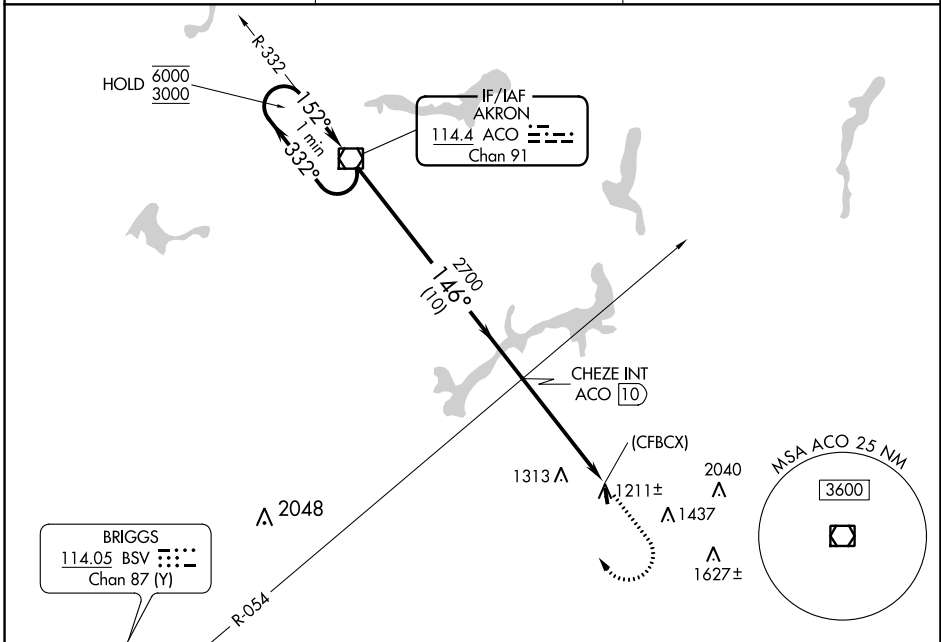


VOR/DME ACO 114.4 Chan 91	APP CRS 146°	Rwy Idg 2768 TDZE 1188 Apt Elev 1188
-----------------------------------------------	------------------------	-----------------------------------------------------------------

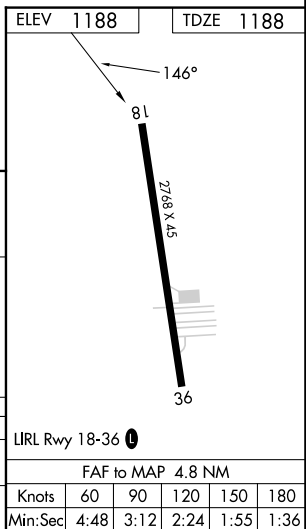
VOR RWY 18

TRI-CITY (3G6)

<p>▽ Procedure NA at night. Rwy 18 helicopter visibility reduction below 1 SM NA. Use Akron-Canton Rgnl altimeter setting, when not received, use Ravenna altimeter setting.</p> <p>△ NA</p>	<p>MISSED APPROACH: Climb to 3000 then climbing right turn to 3100 direct ACO VOR/DME and hold.</p>	
<p>CAK ASOS 121.05</p>	<p>CLEVELAND APP CON * 125.5 371.875</p>	<p>CTAF 122.9 0</p>



One Minute Holding Pattern	ACO VOR/DME	3000	3100	ACO
6000 ← 332°	→ 152°	↑	↷	☐
3000	146°	CHEZE INT ACO (10)		
	2700	(CFBCX)		
	2.79°	TCH 40		
	10 NM	4.8 NM	0.2	
CATEGORY	A	B	C	D
S-18	1680-1	492 (500-1)	NA	
CIRCLING	1680-1	1800-1	NA	
	492 (500-1)	612 (700-1)		



EC-2, 16 MAY 2024 to 13 JUN 2024

EC-2, 16 MAY 2024 to 13 JUN 2024