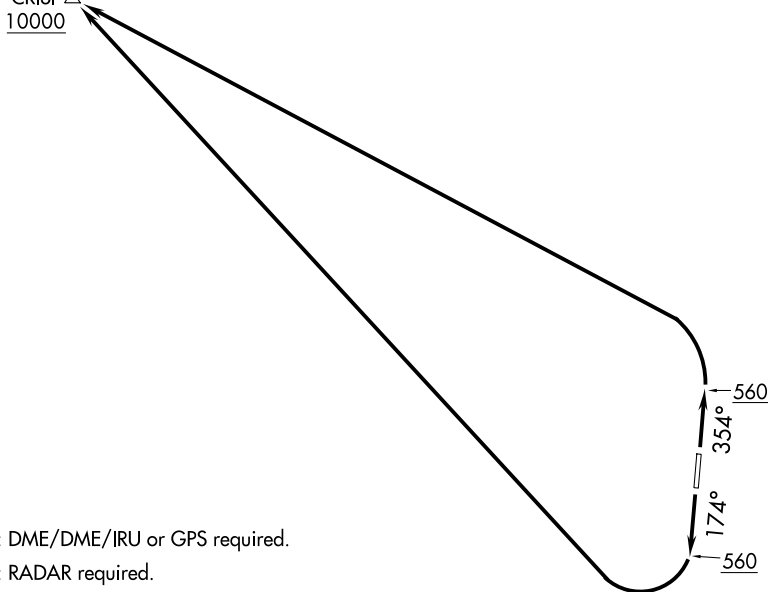


ATIS  
127.4  
CLNC DEL  
118.6  
KONA TOWER \*  
120.3 254.3  
HCF CENTER  
118.45 278.3

CRISI  $\Delta$   
10000



NOTE: DME/DME/IRU or GPS required.

NOTE: RADAR required.

NOTE: RNAV 1

TAKEOFF MINIMUMS  
Rwys 17, 35: Standard.

NOTE: Chart not to scale.



DEPARTURE ROUTE DESCRIPTION

TAKEOFF RUNWAY 17: Climb on heading 174° to 560 then climbing right turn to 10000 direct CRISI.

TAKEOFF RUNWAY 35: Climb on heading 354° to 560 then climbing left turn to 10000 direct CRISI.