

LOC I-CAC 111.7	APP CRS 174°	Rwy Idg TDZE Apt Elev 6705 1530 1534
---------------------------	------------------------	--

ILS or LOC RWY 17

NEWTON-CITY-COUNTY (E WK)

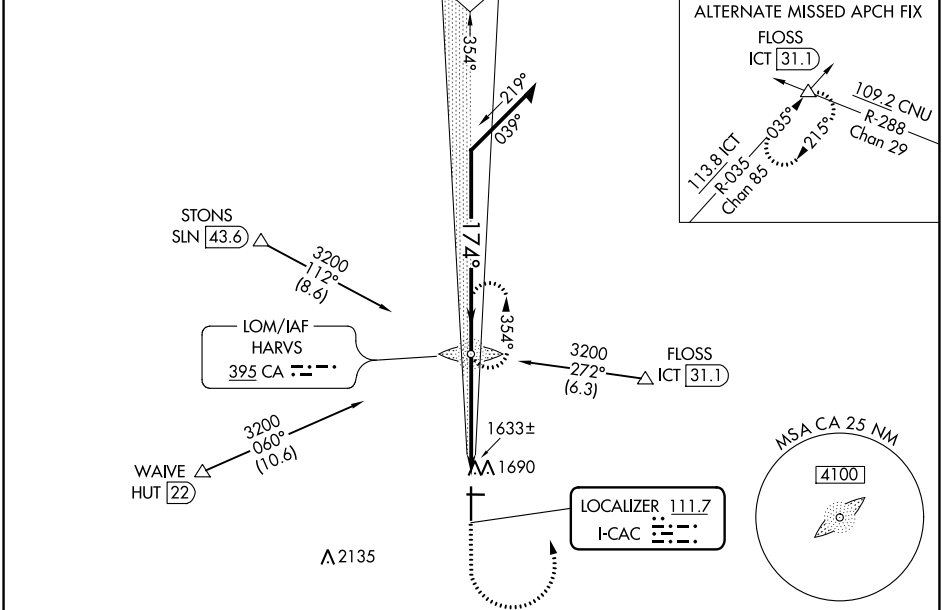
ADF required for Procedure entry. ADF required.

▼ When local altimeter setting not received, use Wichita Dwight D Eisenhower Ntl altimeter setting: increase S-ILS 17 DA to 1819 feet; increase all MDAs 100 feet and visibility S-LOC 17 Cat C/D 3/8 SM. For inop ALS, increase S-LOC 17 Cat C/D visibility to 1 SM. Circling Rwy 8, 26 NA at night. For inop ALS when using Wichita Dwight D Eisenhower Ntl altimeter setting, increase S-ILS 17 visibility to 3/8 SM and S-LOC 17 Cat C/D to 1 3/8 SM. Autopilot coupled approach NA below 2000.



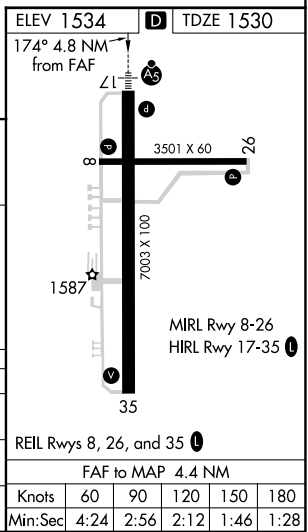
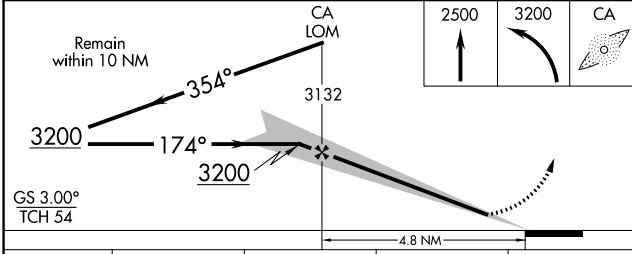
MISSED APPROACH: Climb to 2500 then climbing left turn to 3200 direct HARVS LOM and hold.

AWOS-3PT 123.875	WICHITA APP CON 125.5 306.2	CLNC DEL 126.55	UNICOM 123.0 (CTAF)
----------------------------	---------------------------------------	---------------------------	-------------------------------



NC-2, 16 MAY 2024 to 13 JUN 2024

NC-2, 16 MAY 2024 to 13 JUN 2024



CATEGORY	A	B	C	D
S-ILS 17	1730-1/2 200 (200-1/2)			
S-LOC 17	1900-1/2 370 (400-1/2)		1900-5/8 370 (400-5/8)	
CIRCLING	2000-1 466 (500-1)		2000-1 1/2 2100-2 466 (500-1 1/2) 566 (600-2)	