

WAAS CH 70503 W31A	APP CRS 310°	Rwy Idg TDZE Apt Elev	4408 2032 2034
--	------------------------	-----------------------------	---

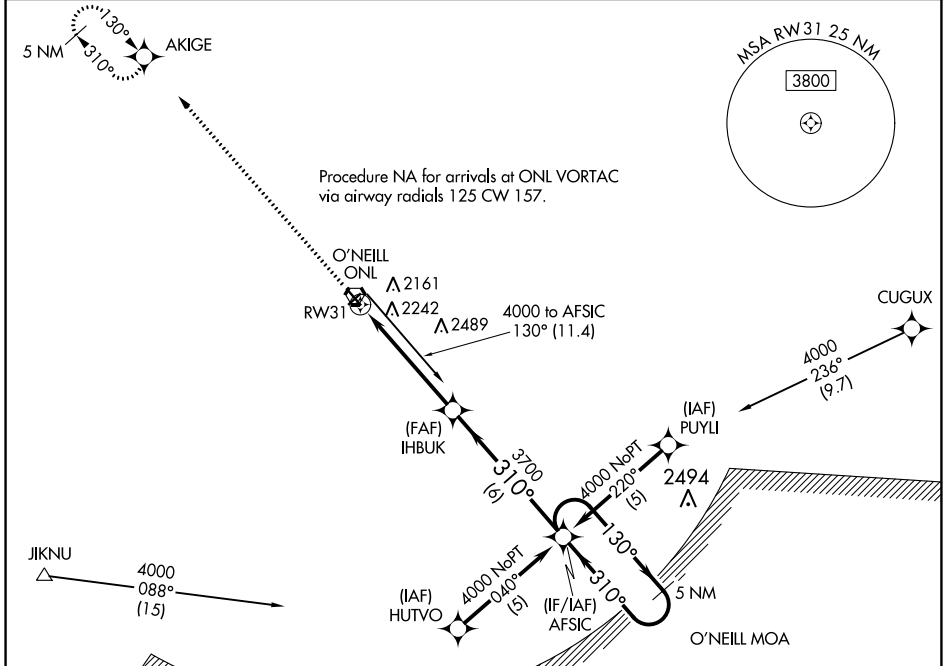
RNAV (GPS) RWY 31

THE O'NEILL MUNI-JOHN L BAKER FLD (ONL)

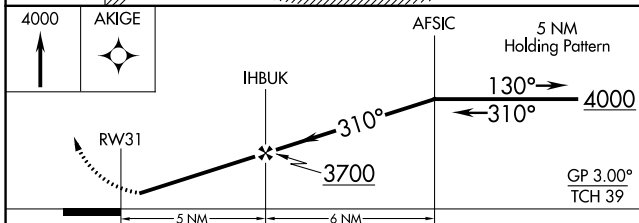
⚠ When local altimeter setting not received, use Evelyn Sharp Fld altimeter setting and increase LPV DA to 2407 feet, LNAV/VNAV DA to 2726 feet; Increase all MDAs 140 feet and visibility Cat C ½ SM. Baro-VNAV NA when using Evelyn Sharp Fld altimeter setting. For uncompensated Baro-VNAV systems, LNAV/VNAV NA below -19°C (-2°F) or above 54°C (130°F). DME/DME RNP-0.3 NA. Helicopter visibility reduction below 1 SM NA. Night landing: Rwy 4, 22 NA.

MISSED APPROACH: Climb to 4000 direct AKIGE and hold.

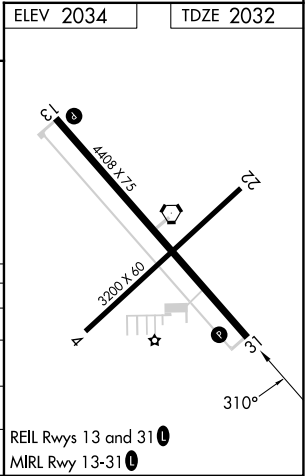
AWOS-3 121.125	MINNEAPOLIS CENTER 128.0 257.95	UNICOM 122.8 (CTAF) 1
--------------------------	---	---------------------------------



ELEV 2034	TDZE 2032
-----------	-----------



CATEGORY	A	B	C	D
LPV DA	2282-1 250 (300-1)			NA
LNAV/VNAV DA	2601-2 569 (600-2)			NA
LNAV MDA	2580-1 548 (600-1)		2580-1½ 548 (600-1½)	NA
CIRCLING	2600-1 566 (600-1)		2680-1¾ 646 (700-1¾)	NA



NC-2, 16 MAY 2024 to 13 JUN 2024

NC-2, 16 MAY 2024 to 13 JUN 2024