

WAAS CH <b>97726</b> <b>W26A</b>	APP CRS <b>267°</b>	Rwy Idg TDZE Apt Elev	<b>9000</b> <b>96</b> <b>96</b>
--	------------------------	-----------------------------	---------------------------------------

# RNAV (GPS) Z RWY 26R

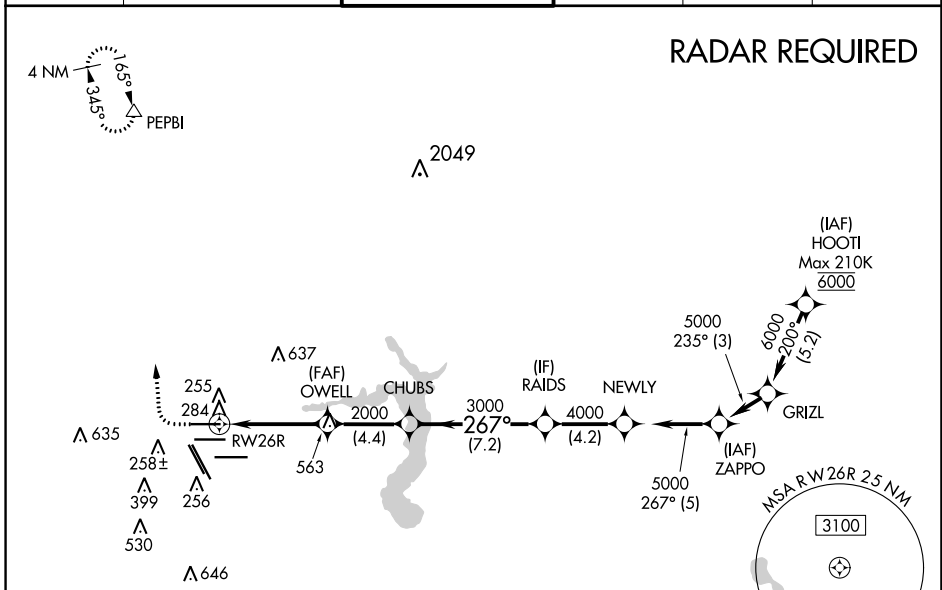
GEORGE BUSH INTCNTL/HOUSTON (IAH)

**▼** For uncompensated Baro-VNAV systems, LNAV/VNAV NA below -3°C (27°F) or above 54°C (130°F). For inop ALSF, increase LPV Cat E visibility to RVR 4000, LNAV/VNAV all Cats visibility to 1¼, and LNAV Cat C/D/E visibility to 1¾. DME/DME RNP-0.3 NA. Simultaneous approach authorized with Rwy 26L and Rwy 27. LNAV procedure NA during simultaneous operations. Use of FD or AP providing RNAV track guidance required during simultaneous operations.

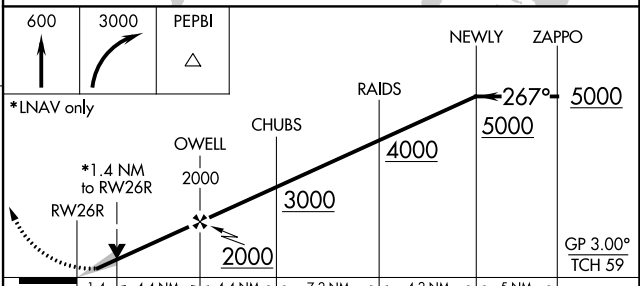
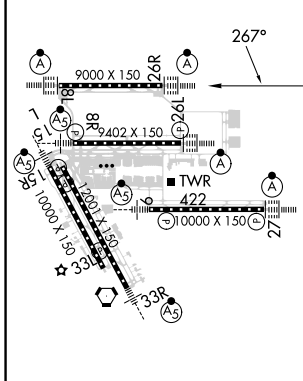


**MISSED APPROACH:** Climb to 600 then climbing right turn to 3000 direct PEPBI and hold.

D-ATIS <b>124.05</b>	HOUSTON APP CON <b>120.05 379.1 EAST</b> <b>124.35 316.15 WEST</b>	HOUSTON TOWER <b>120.72 290.2</b>	GND CON <b>121.7</b>	CLNC DEL <b>128.1</b>	CPDLC
-------------------------	--	--------------------------------------	-------------------------	--------------------------	-------



ELEV 96	<b>D</b>	TDZE 96
---------	----------	---------



CATEGORY	A	B	C	D	E
LPV DA	296/18		200 (200-½)		
LNAV/VNAV DA	496/42		400 (400-¾)		
LNAV MDA	600/24	504 (600-½)	600/55		504 (600-1)

TDZ/CL Rws 8R, 8L, 15R, 26R, 26L, 27 and 33L  
HIRL all Rws

SC-5, 16 MAY 2024 to 13 JUN 2024

SC-5, 16 MAY 2024 to 13 JUN 2024