

TOP ALTITUDE:  
16000

RADAR and DME required.

TAKEOFF MINIMUMS  
Rwys 8L/R, 9, 27, 15L/R, 26L/R, 33L/R: Standard.

- D-ATIS 124.05
- CINC DEL 128.1
- CPDLC 128.1
- GND CON 118.575 (Rwys 8L/R, 26L/R, 9/27)
- 121.7 (Rwys 15L/R, 33L/R)
- HOUSTON TOWER 120.725 290.2 (Rwys 8L/26R)
- 125.35 290.2 (Rwys 8R/26L)
- 127.3 288.25 (Rwys 15L/R, 33L/R)
- 135.15 290.2 (Rwys 9/27)
- HOUSTON DEP CON 127.125 269.075



FORT STOCKTON  
116.9 FST  
Chan 116

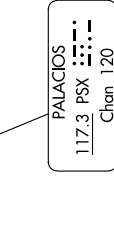
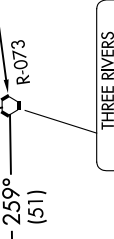
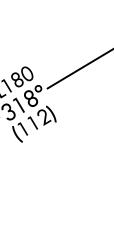
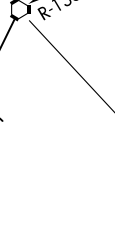
SAN ANTONIO  
116.8 SAT  
Chan 115

ROCKSPRINGS  
114.55 RSG  
Chan 92 (Y)

COTUILA  
115.8 COT  
Chan 105

THREE RIVERS  
111.4 THX  
Chan 51

PALACIOS  
117.3 PSX  
Chan 120



(CONTINUED ON FOLLOWING PAGE)

NOTE: Chart not to scale.