

(JCT1..JCT) 24137

GEORGE BUSH INTCNTL/HOUSTON (IAH)

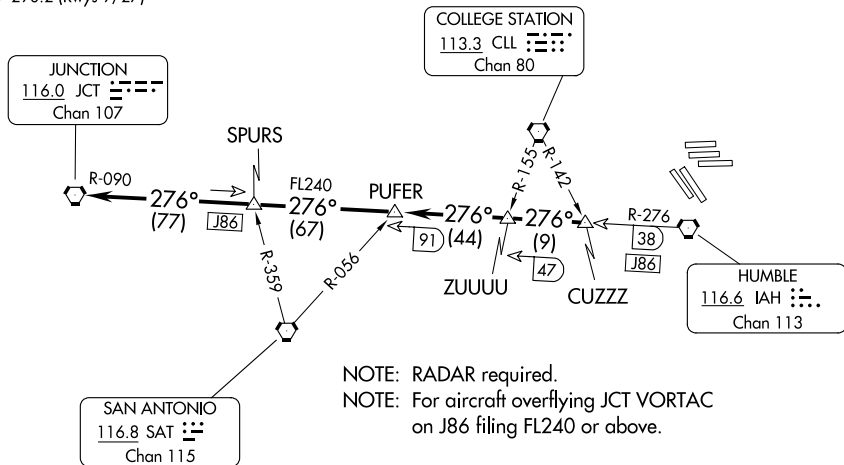
JUNCTION ONE DEPARTURE

AL-5461 (FAA)

HOUSTON, TEXAS

D-ATIS 124.05
 CLNC DEL 128.1
 CPDLC
 HOUSTON DEP CON
 126.675 339.8
 GND CON
 118.575 (Rwys 8L/R, 26L/R, 9/27)
 121.7 (Rwys 15L/R, 33L/R)
 HOUSTON TOWER
 120.725 290.2 (Rwys 8L/26R)
 125.35 290.2 (Rwys 8R/26L)
 127.3 288.25 (Rwys 15L/R, 33L/R)
 135.15 290.2 (Rwys 9/27)

**TOP ALTITUDE:
16000**



NOTE: RADAR required.
 NOTE: For aircraft overflying JCT VORTAC on J86 filing FL240 or above.

TAKEOFF MINIMUMS

Rwys 8L/R, 9, 15L/R, 26L/R, 27, 33L/R: Standard.

NOTE: Chart not to scale.



DEPARTURE ROUTE DESCRIPTION

TAKEOFF ALL RUNWAYS: Climb on assigned heading for RADAR vectors to CUZZZ INT. Maintain 16000. Expect filed altitude 10 minutes after departure. Thence

. . . . on IAH R-276 and JCT R-090 to JCT VORTAC.

JUNCTION ONE DEPARTURE

HOUSTON, TEXAS

(JCT1..JCT) 22JUN17

GEORGE BUSH INTCNTL/HOUSTON (IAH)

SC-5, 16 MAY 2024 to 13 JUN 2024

SC-5, 16 MAY 2024 to 13 JUN 2024