

LOC/DME I-GHI 110.9 Chan 46	APP CRS 267°	Rwy Idg 10000 TDZE 86 Apt Elev 96
---	------------------------	--

ILS or LOC RWY 27

GEORGE BUSH INTCNL/HOUSTON (IAH)

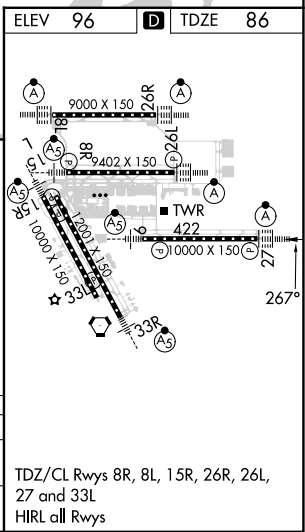
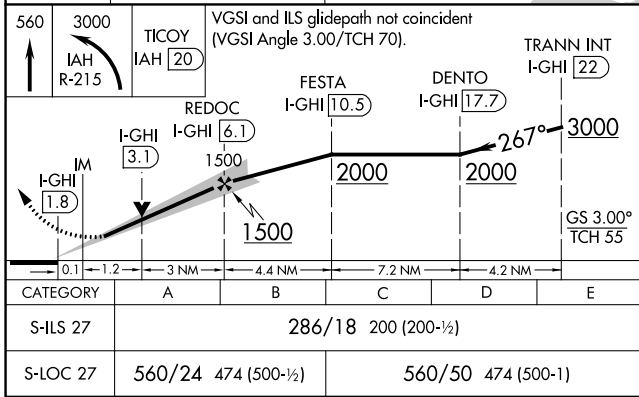
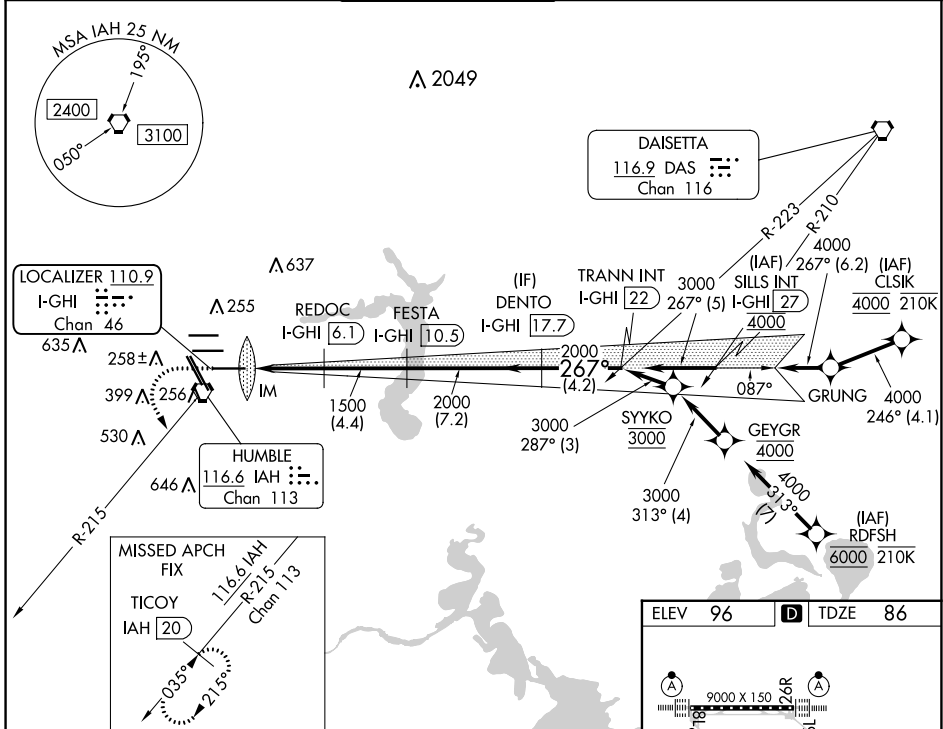
RNAV 1-GPS or RADAR required for procedure entry.
DME required.

Simultaneous approach authorized. Use of FD or AP required during simultaneous operations. For inop ALS, increase S-ILS 27 Cat E visibility to RVR 4000 and S-LOC 27 Cat C-E visibility to 1 1/8 SM.

ALSF-2

MISSED APPROACH: Climb to 560 then climbing left turn to 3000 on IAH VORTAC R-215 to TICOY/IAH 20 DME and hold.

D-ATIS 124.05	HOUSTON APP CON 120.05 379.1 EAST 124.35 316.15 WEST	HOUSTON TOWER 135.15 290.2	GND CON 118.575	CLNC DEL 128.1	CPDLC
-------------------------	--	--------------------------------------	---------------------------	--------------------------	-------



SC-5, 16 MAY 2024 to 13 JUN 2024

SC-5, 16 MAY 2024 to 13 JUN 2024