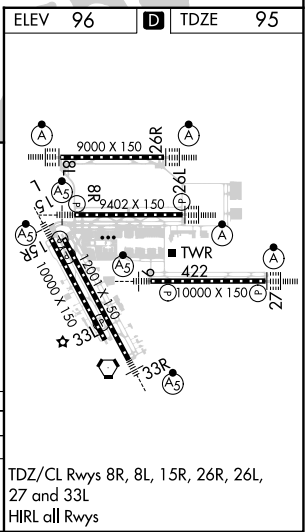
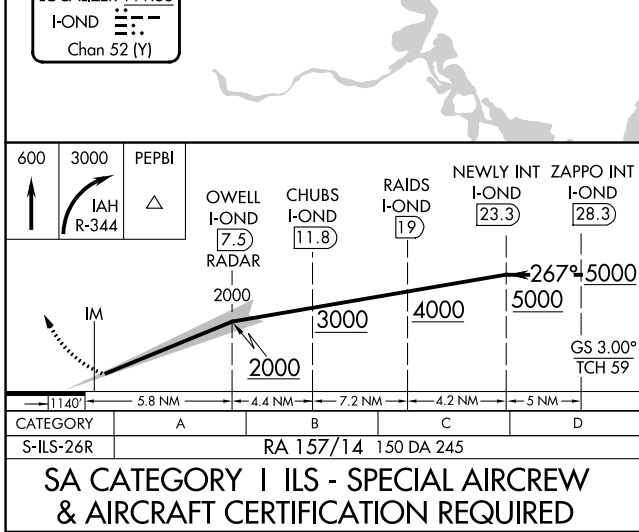
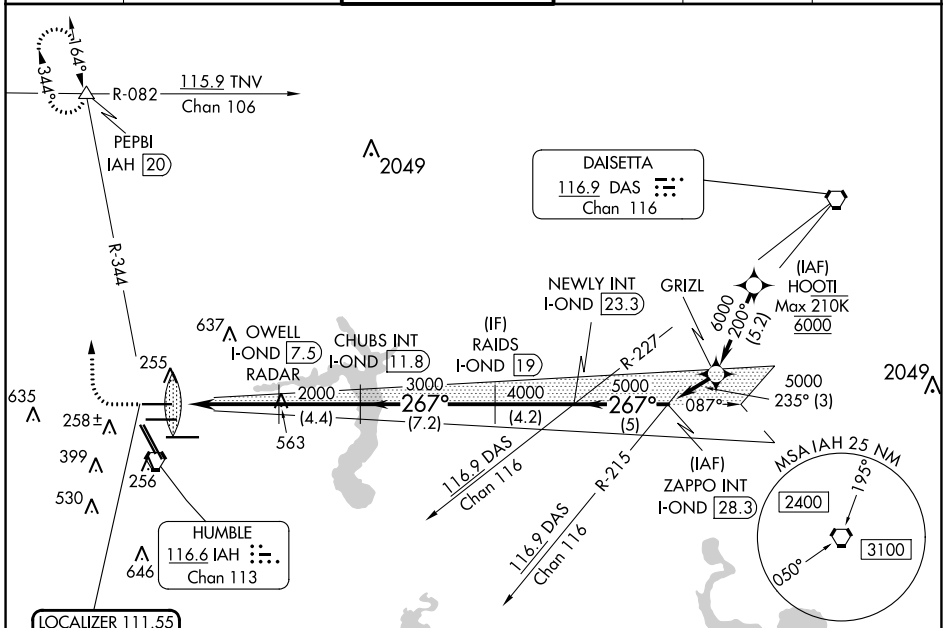


LOC/DME I-OND 111.55 Chan 52 (Y)	APP CRS 267°	Rwy Idg 9000 TDZE 95 Apt Elev 96
--	------------------------	---

ILS RWY 26R (SA CAT I)

GEORGE BUSH INTCNL/HOUSTON (IAH)

DME required. From HOOI: RNAV 1-GPS required.			ALSF-2 	MISSED APPROACH: Climb to 600 then climbing right turn to 3000 on IAH VORTAC R-344 to PEPBI INT/ IAH 20 DME and hold.	
Simultaneous approach authorized with Rwy 26L and Rwy 27. Requires specific OPSPEC, MSPEC or LOA approval and use of HUD to DH.			D-ATIS 124.05	HOUSTON APP CON 120.05 379.1 EAST 124.35 316.15 WEST	HOUSTON TOWER 120.725 290.2
GND CON 118.575		CLNC DEL 128.1		CPDLC	



TDZ/CL Rwys 8R, 8L, 15R, 26R, 26L, 27 and 33L
HIRL all Rwys

SC-5, 16 MAY 2024 to 13 JUN 2024

SC-5, 16 MAY 2024 to 13 JUN 2024