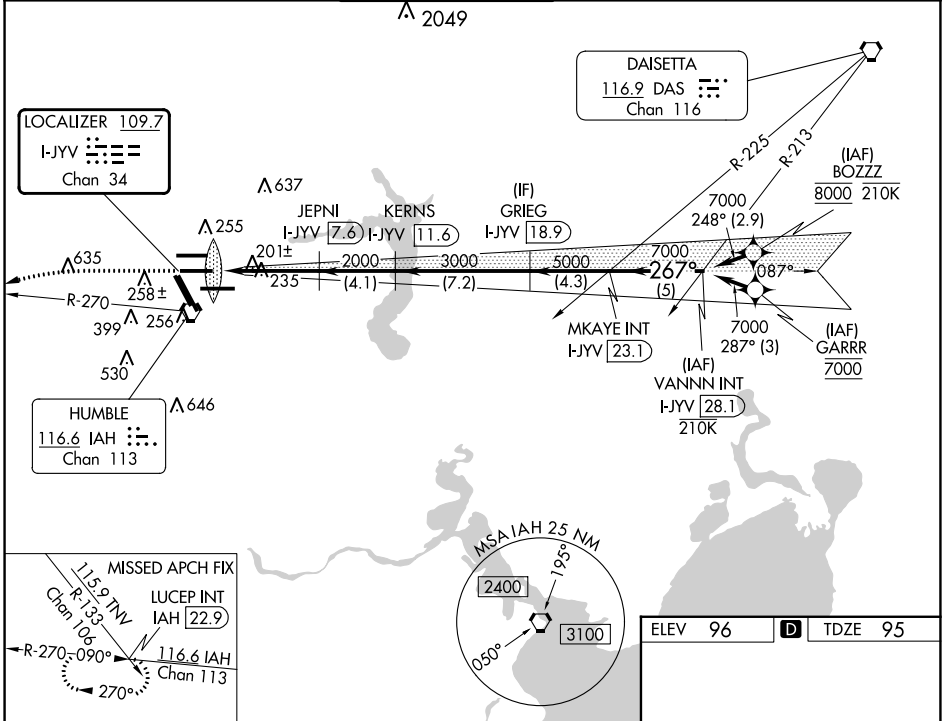


LOC/DME I-JYV 109.7 Chan 34	APP CRS 267°	Rwy Idg TDZE Apt Elev	9402 95 96
---	------------------------	-----------------------------	---------------------------------------

ILS RWY 26L (CAT II & III)

GEORGE BUSH INTCNL/HOUSTON (IAH)

DME required. From BOZZZ, GARRR: RNAV 1-GPS required.			ALSF-2 	MISSED APPROACH: Climb to 3000 then left turn heading 240° and IAH VORTAC R-270 to LUCEP INT/IAH 22.9 DME and hold.	
Simultaneous approach authorized with Rwy 26R and Rwy 27. Cat II: RVR 1000 authorized with specific OPSPEC, MSPEC, or LOA approval and use of autoland or HUD to touchdown.					
D-ATIS 124.05	HOUSTON APP CON 120.05 379.1 EAST 124.35 316.15 WEST	HOUSTON TOWER 125.35 290.2	GND CON 118.575	CLNC DEL 128.1	CPDLC



SC-5, 16 MAY 2024 to 13 JUN 2024

SC-5, 16 MAY 2024 to 13 JUN 2024

3000	hdg 240°	IAH R-270	LUCEP INT	MKAYE INT I-JYV 23.1	VANNIN INT I-JYV 28.1
VGSI and ILS glidepath not coincident (VGSI Angle 3.00/TCH 71).					
IM 190	2000	2000	3000	5000	7000
JEPNI I-JYV 7.6 KERNIS I-JYV 11.6 GRIEG I-JYV 18.9 MKAYE INT I-JYV 23.1 VANNIN INT I-JYV 28.1					
GS 3.00° TCH 56					
-1042- -5.8 NM -4.1 NM -7.2 NM -4.3 NM 5 NM					
CATEGORY	A	B	C	D	
S-ILS 26L	CAT II RA 100/12		100 DA 195		
S-ILS 26L	CAT III RVR 06				
CATEGORY II & III ILS - SPECIAL AIRCREW & AIRCRAFT CERTIFICATION REQUIRED					

