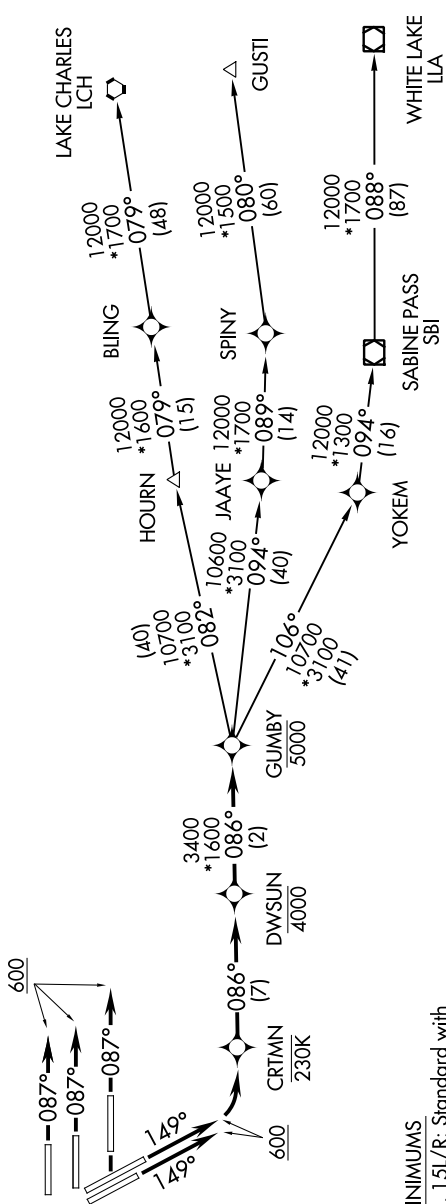


GUMBY THREE DEPARTURE (RNAV)

AL-5461 (FAA)

HOUSTON, TEXAS

TOP ALTITUDE:
16000



TAKEOFF MINIMUMS

Rwy 8L/R, 9, 15L/R: Standard with minimum climb of 500' per NM to 1700.

NOTE: RADAR required.

NOTE: DME/DME/IRU or GPS Required.

NOTE: RNAV 1.

(NARRATIVE ON FOLLOWING PAGE)

NOTE: Chart not to scale.