

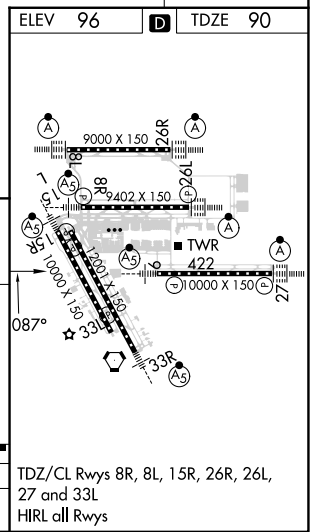
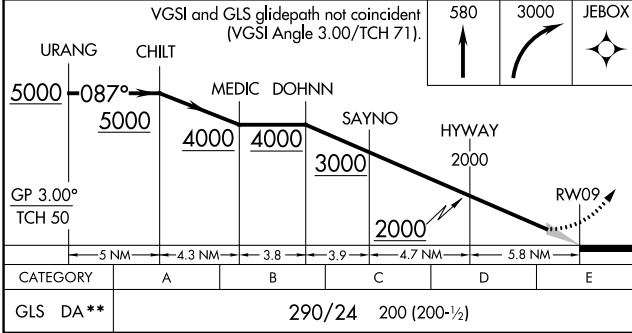
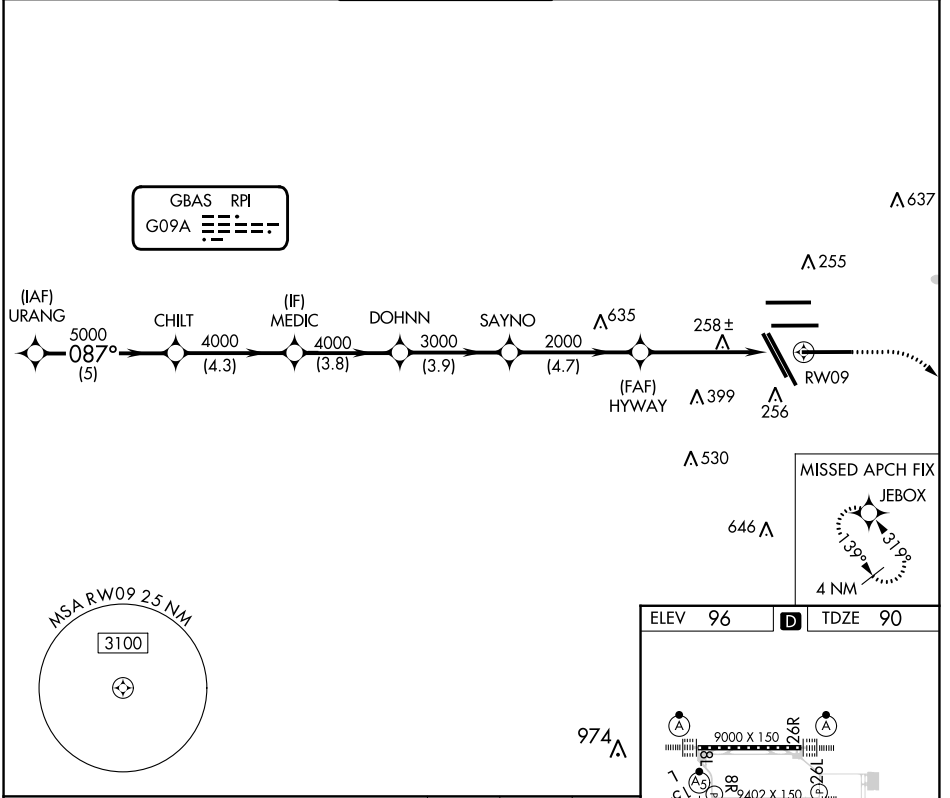
GBAS CH 21895 RPI G09A	APP CRS 087°	Rwy ldg 10000 TDZE 90 Apt Elev 96
--	------------------------	--

GLS RWY 9

GEORGE BUSH INTCNL/HOUSTON (IAH)

RNP APCH - GPS.		MALSR 	MISSED APPROACH: Climb to 580 then climbing right turn to 3000 direct JEBOX and hold.
 Simultaneous approach authorized. Use of FD or AP required during simultaneous operations. Autopilot coupled approach NA below 290. ** RVR 1800 authorized with use of FD or AP or HUD to DA.			

D-ATIS 124.05	HOUSTON APP CON 120.05 379.1 EAST 124.35 316.15 WEST	HOUSTON TOWER 135.15 290.2	GND CON 118.575	CLNC DEL 128.1	CPDLC
-------------------------	--	--------------------------------------	---------------------------	--------------------------	-------



HOUSTON, TEXAS Amdt 1C 23FEB23	GEORGE BUSH INTCNL/HOUSTON (IAH) GLS RWY 9
-----------------------------------	---

29°59'N-95°20'W

SC-5, 16 MAY 2024 to 13 JUN 2024

SC-5, 16 MAY 2024 to 13 JUN 2024