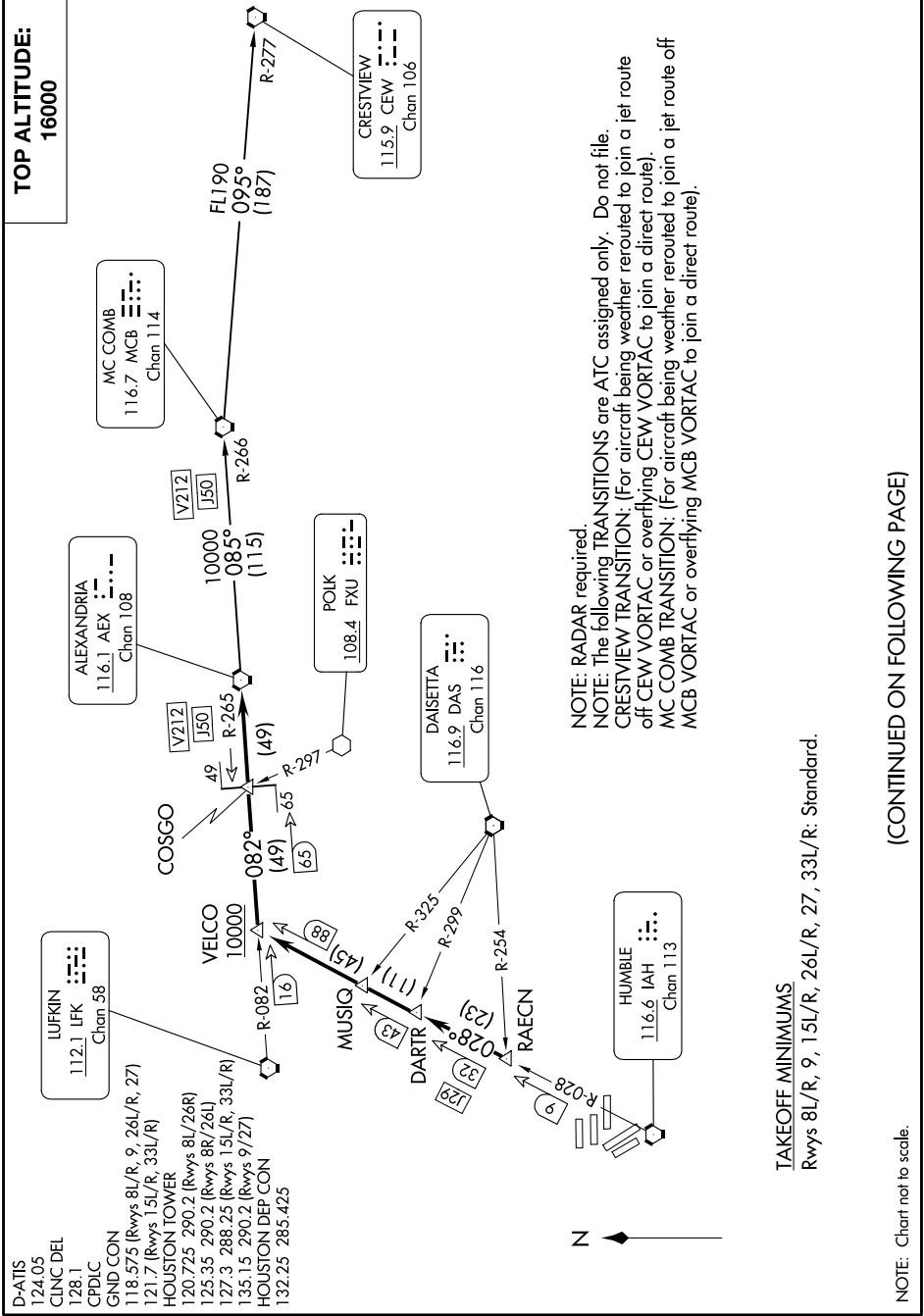


# ALEXANDRIA THREE DEPARTURE

SC-5, 16 MAY 2024 to 13 JUN 2024



- D-ATIS 124.05
- CINCL DEL 128.1
- CPDLC
- GND CON
- 118.575 (Rwys 8L/R, 9, 26L/R, 27)
- 121.7 (Rwys 15L/R, 33L/R)
- HOUSTON TOWER
- 120.725 290.2 (Rwys 8L/26R)
- 125.35 290.2 (Rwys 8R/26L)
- 127.3 288.25 (Rwys 15L/R, 33L/R)
- 135.15 290.2 (Rwys 9/27)
- HOUSTON DEP CON
- 132.25 285.425

# ALEXANDRIA THREE DEPARTURE

NOTE: RADAR required.  
 NOTE: The following TRANSITIONS are ATC assigned only. Do not file.  
 CRESTVIEW TRANSITION: (For aircraft being weather rerouted to join a jet route off CEW VORTAC or overflying CEW VORTAC to join a direct route).  
 MC COMB TRANSITION: (For aircraft being weather rerouted to join a jet route off MCB VORTAC or overflying MCB VORTAC to join a direct route).

TAKEOFF MINIMUMS  
 Rwys 8L/R, 9, 15L/R, 26L/R, 27, 33L/R: Standard.

(CONTINUED ON FOLLOWING PAGE)

NOTE: Chart not to scale.