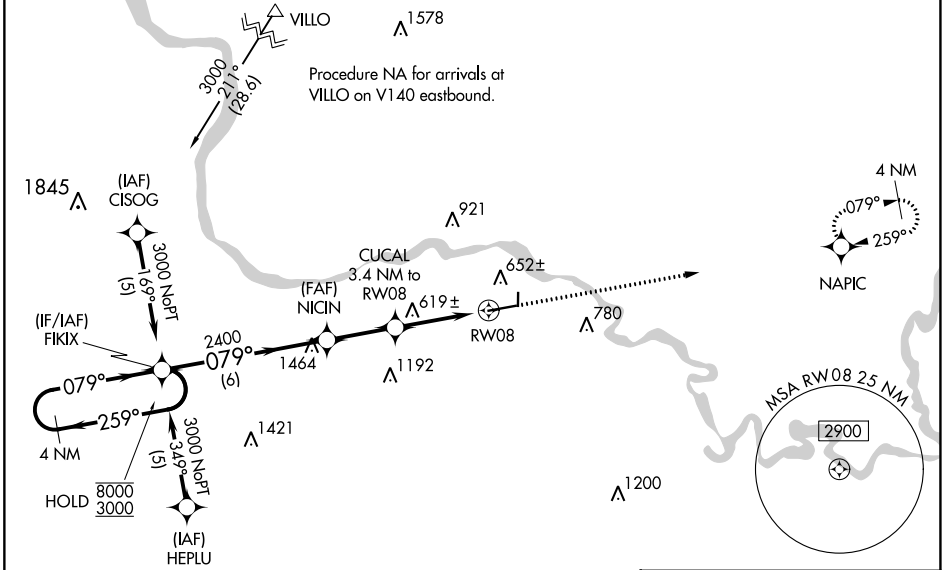


WAAS CH <b>97717</b> <b>W08A</b>	APP CRS <b>079°</b>	Rwy Idg TDZE Apt Elev	<b>6002</b> <b>463</b> <b>465</b>
--	------------------------	-----------------------------	---

# RNAV (GPS) RWY 8

BATESVILLE RGNL (BVX)

RNP APCH - GPS.		<p><b>▽</b> <b>△</b></p> <p>Circling NA north of Rwy 8-26. For uncompensated Baro-VNAV systems, LNAV/VNAV NA below -15°C or above 54°C.</p>	<p>MISSED APPROACH: Climb to 3000 direct NAPIC and hold.</p>
AWOS-3PT <b>126.375</b>	MEMPHIS CENTER <b>126.85 281.55</b>		



SC-1, 16 MAY 2024 to 13 JUN 2024

SC-1, 16 MAY 2024 to 13 JUN 2024

ELEV 465	TDZE 463			
<p>4 NM Holding Pattern</p> <p>VGSI and RNAV glidepath not coincident (VGSI Angle 3.00/TCH 44).</p> <p>8000 ← 259° → 3000</p> <p>GP 3.00° TCH 40</p> <p>FIKIX ← 079° → NICIN (2400) → CUCAL (3.4 NM to RW08) → RW08 (1.4 NM to RW08)</p> <p>3000 NAPIC</p> <p>81 2804 X 60 -0.9% UP</p> <p>76 6002 X 150 36</p> <p>079°</p>				
CATEGORY	A	B	C	D
LPV DA	713-1 250 (300-1)			
LNAV/VNAV DA	802-1¼ 339 (400-1¼)			
LNAV MDA	940-1	477 (500-1)	940-1½ 477 (500-1½)	940-1½ 477 (500-1½)
CIRCLING	980-1 515 (600-1)	1000-1 535 (600-1)	1220-2¼ 755 (800-2¼)	1400-3 935 (1000-3)
REIL Rwys 8 and 26 0				
MIRL Rwy 8-26 0				