

LOC I-ASG 110.9	APP CRS 183°	Rwy Idg TDZE Apt Elev	4939 1351 1353
---------------------------	------------------------	-----------------------------	---

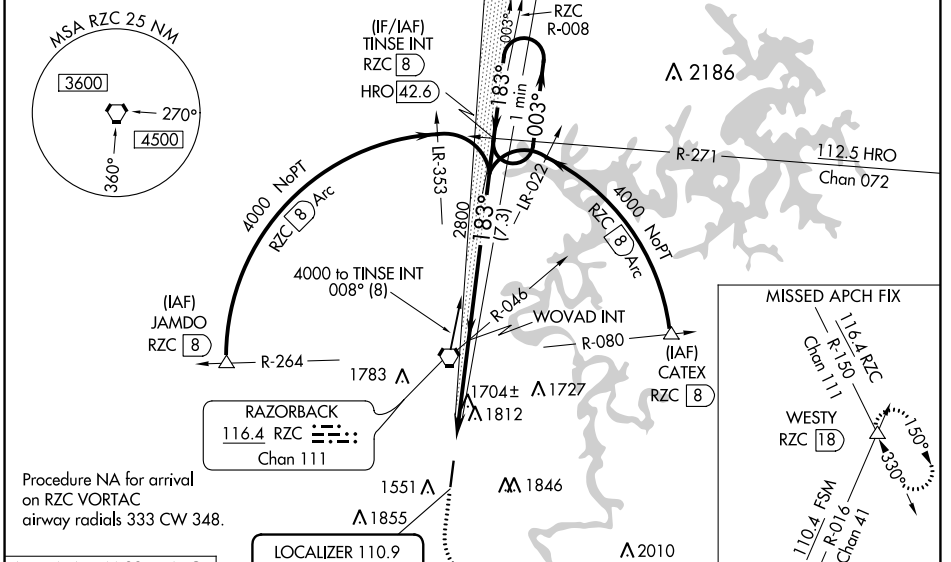
AL-5165 (FAA)

ILS or LOC RWY 18

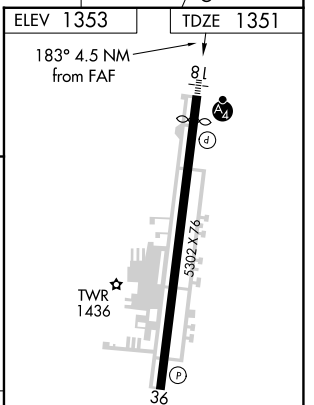
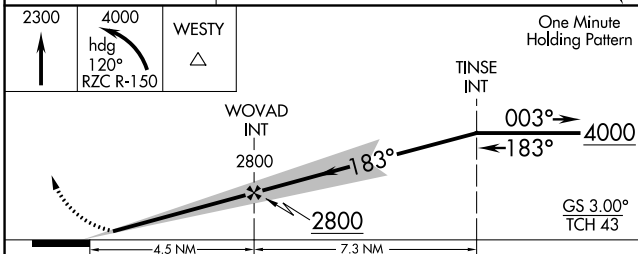
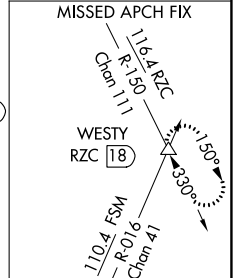
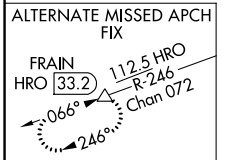
SPRINGDALE MUNI (ASG)

MAJSAF MISSED APPROACH: Climb to 2300 then climbing left turn to 4000 on heading 120° and RZC VORTAC R-150 to WESTY INT/RZC 18 DME and hold.

AWOS-3 124.675	RAZORBACK APP CON* 126.6 305.2	SPRINGDALE TOWER* 118.2 (CTAF) 0	GND CON 121.6	REIL 18, 36 122.8 0	UNICOM 122.95
--------------------------	--	--	-------------------------	-------------------------------	-------------------------



Procedure NA for arrival on RZC VORTAC airway radials 333 CW 348.



CATEGORY	A	B	C	D	REIL Rwy 18, 36 HIRL Rwy 18-36
S-ILS 18		1605-3/4	254 (300-3/4)		
S-LOC 18	1960-3/4	609 (700-3/4)	1960-1 1/2	609 (700-1 1/2)	FAF to MAP 4.5 NM
CIRCLING	1960-1 607 (700-1)	2000-1 647 (700-1)	2020-1 3/4 667 (700-1 3/4)	2220-2 3/4 867 (900-2 3/4)	Knots: 60 90 120 150 180 Min:Sec: 4:30 3:00 2:15 1:48 1:30

SC-1, 16 MAY 2024 to 13 JUN 2024

SC-1, 16 MAY 2024 to 13 JUN 2024