

APP CRS	Rwy Idg	10014
063°	TDZE	258
	Apt Elev	305


RNAV (RNP) Z RWY 6R

GUAM INTL (GUM)(PGUM)

RNP AR APCH - GPS.

▼ For uncompensated Baro-VNAV systems, procedure NA below 19°C or above 48°C. For inop ALS, increase RNP 0.30 all Cats visibility to 1½ SM. Inop table does not apply to RNP 0.30.*
 *Missed approach requires a minimum climb of 285 feet per NM to 1400.

MALSR



MISSED APPROACH: Climb to 3000 via track 063° to CIBOL and hold.

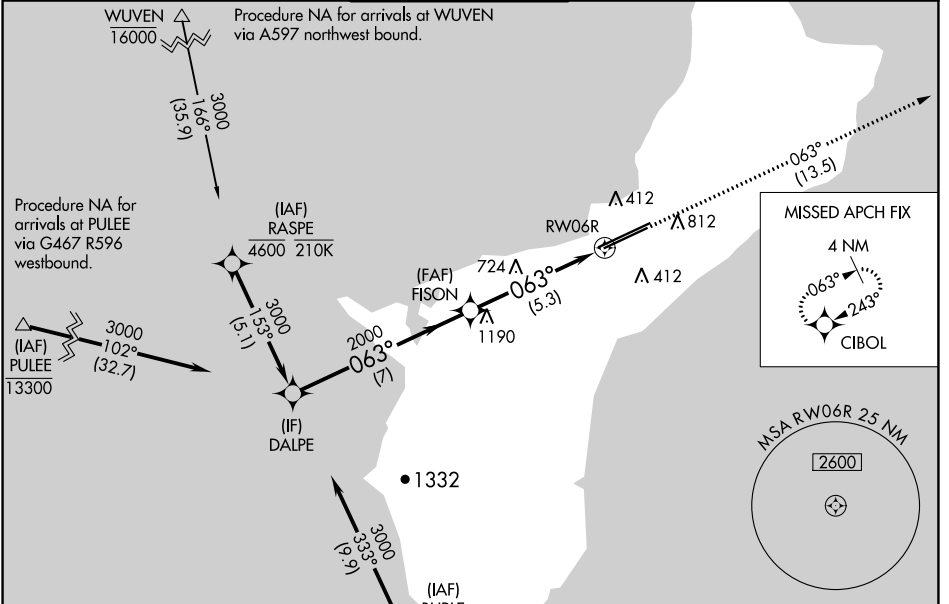
ATIS
119.0

GUAM CERAP
119.8 269.0

AGANA TOWER
118.1 340.2

GND CON
121.9 336.4

CLNC DEL
121.9



PAC, 16 MAY 2024 to 11 JUL 2024

PAC, 16 MAY 2024 to 11 JUL 2024

ELEV 305	D TDZE 258
----------	-------------------



Procedure Turn NA	DALPE	VGSI and RNAV glidepath not coincident (VGSI Angle 3.00/TCH 76).		3000	CIBOL
		FISON		↑ tr 063°	✧
	3000	2000			
	7 NM		5.3 NM		
CATEGORY	A	B	C	D	
RNP 0.30* DA		511-¾	253 (300-¾)		
RNP 0.30 DA		656-¾	398 (400-¾)		
AUTHORIZATION REQUIRED					

