

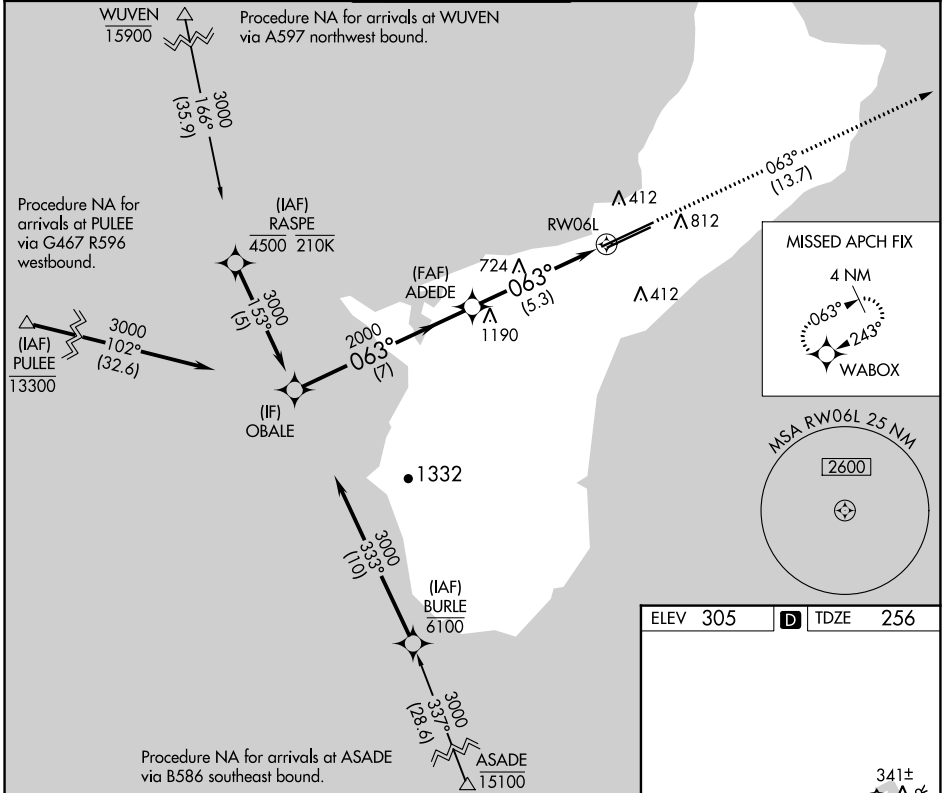
APP CRS	Rwy Idg	<b>11014</b>
<b>063°</b>	TDZE	<b>256</b>
	Apt Elev	<b>305</b>

# RNAV (RNP) Z RWY 6L

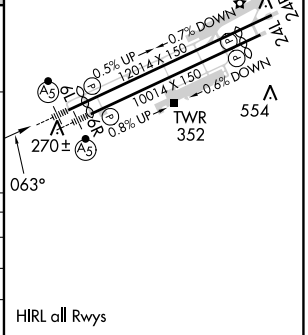
GUAM INTL (GUM)(PGUM)

RNP AR APCH - GPS.		MALS R	MISSED APPROACH: Climb to 3000 via track 063° to WABOX and hold.
<p>▼ For uncompensated Baro-VNAV systems, procedure NA below 19°C or above 48°C. For inop ALS, increase RNP *0.30 all Cats visibility to ¾ SM and RNP 0.30 all Cats visibility to 1½ SM. *Missed approach requires a minimum climb of 276 feet per NM to 1400.</p>			

ATIS	GUAM CERAP	AGANA TOWER	GND CON	CLNC DEL
<b>119.0</b>	<b>119.8 269.0</b>	<b>118.1 340.2</b>	<b>121.9 336.4</b>	<b>121.9</b>



Procedure Turn NA	OBALE	VGSI and RNAV glidepath not coincident (VGSI Angle 3.00/TCH 73)	3000	WABOX
			tr 063°	
GP 3.00° TCH 50				
CATEGORY	A	B	C	D
RNP 0.30* DA		514-½	258 (300-½)	
RNP 0.30 DA		656-⅝	400 (400-⅝)	



**AUTHORIZATION REQUIRED**

HIRL all Rwys