

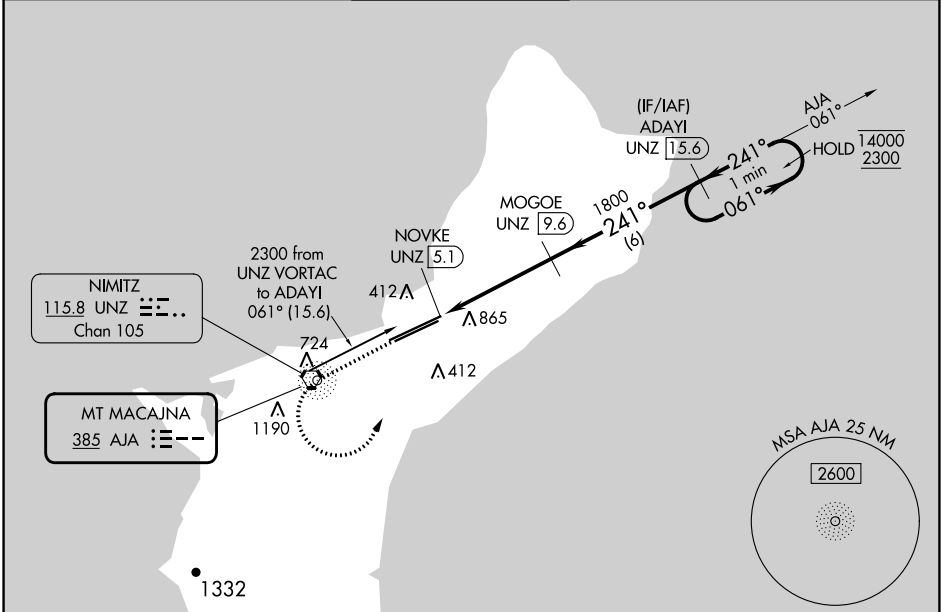
NDB AJA 385	APP CRS 241°	Rwy Idg 12014 TDZE 305 Apt Elev 305
-----------------------	------------------------	--

NDB RWY 24R

GUAM INTL (GUM)(PGUM)

DME required.		MISSED APPROACH: Climb to 2300 direct AJA NDB and left turn on AJA bearing 061° to ADAYI/UNZ 1.5.6 DME and hold.
<p>▼ Circling NA southeast of Rwy 6R-24L. Rwy 24R helicopter visibility reduction below 3/4 SM NA. Simultaneous reception of AJA NDB and UNZ DME required.</p> <p>▲ NA</p>		

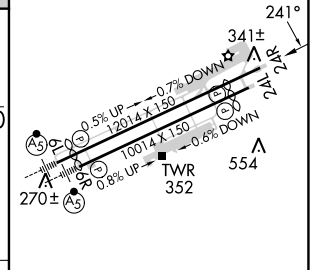
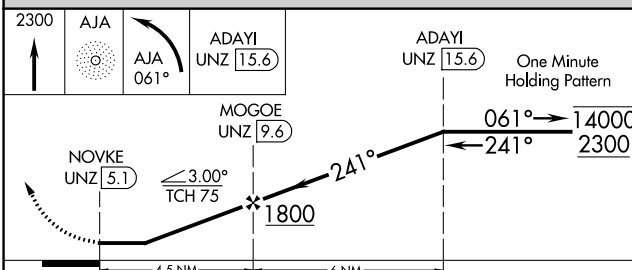
ATIS 119.0	GUAM CERAP 119.8 269.0	AGANA TOWER 118.1 340.2	GND CON 121.9 336.4	CLNC DEL 121.9
----------------------	----------------------------------	-----------------------------------	-------------------------------	--------------------------



PAC, 16 MAY 2024 to 11 JUL 2024

PAC, 16 MAY 2024 to 11 JUL 2024

ELEV 305	D TDZE 305
----------	-------------------



CATEGORY	A	B	C	D
S-24R	1220-1¼ 915 (1000-1¼)		1220-2½ 915 (1000-2½)	
C CIRCLING	1220-1¼ 915 (1000-1¼)		1220-2¾ 915 (1000-2¾)	NA

HIRL all Rwys