
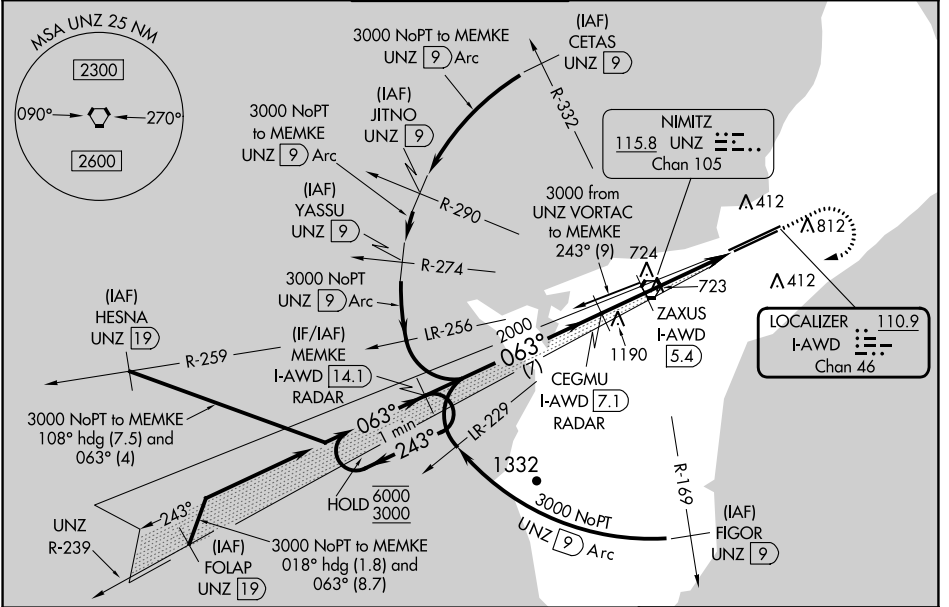


LOC/DME I-AWD 110.9 Chan 46	APP CRS 063°	Rwy Idg 10014 TDZE 258 Apt Elev 305
---	------------------------	--

ILS or LOC RWY 6R

GUAM INTL (GUM)(PGUM)

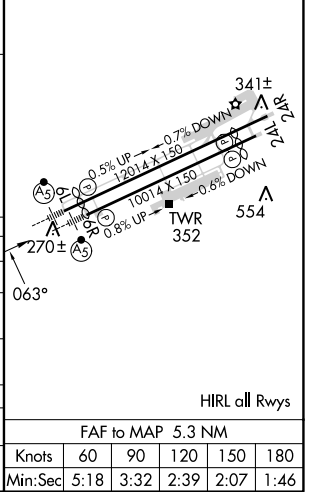
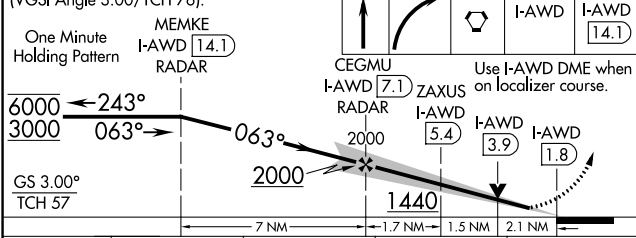
DME or RADAR required.		MALSR 		MISSED APPROACH: Climb to 2100 then climbing right turn to 3000 direct UNZ VORTAC and on I-AWD to MEMKE/I-AWD 14.1 DME/RADAR and hold.	
<p>⚠ Circling NA southeast of Rwy 6R-24L. Rwy 6R helicopter visibility reduction below ¼ SM NA. Inop table does apply to S-LOC 6R Cat C and D. ZAXUS fix minimums (DME required): For inop ALS, increase S-LOC 6R Cat A and B visibility to 1 SM and Cats C and D to 2 SM.</p>					
ATIS 119.0	GUAM CERAP 119.8 269.0	AGANA TOWER 118.1 340.2	GND CON 121.9 336.4	CLNC DEL 121.9	



PAC, 16 MAY 2024 to 11 JUL 2024

PAC, 16 MAY 2024 to 11 JUL 2024

VGSI and ILS glidepath not coincident (VGSI Angle 3.00/TCH 76).	2100	3000	UNZ	MEMKE	ELEV 305	TDZE 258
---	------	------	-----	-------	----------	----------



CATEGORY	A	B	C	D
S-ILS 6R	603-¾ 345 (300-¾)			
S-LOC 6R	1440-¾ 1182 (1200-¾)	1440-1 1182 (1200-1)	1440-3 1182 (1200-3)	
C CIRCLING	1440-1¼ 1135 (1200-1¼)	1440-1½ 1135 (1200-1½)	1440-3 1135 (1200-3)	NA
ZAXUS FIX MINIMUMS (DME REQUIRED)				
S-LOC 6R	980-¾ 722 (700-¾)	980-1½ 722 (700-1½)		
C CIRCLING	980-1 675 (700-1)	980-2 675 (700-2)		NA

FAF to MAP 5.3 NM					
Knots	60	90	120	150	180
Min:Sec	5:18	3:32	2:39	2:07	1:46