

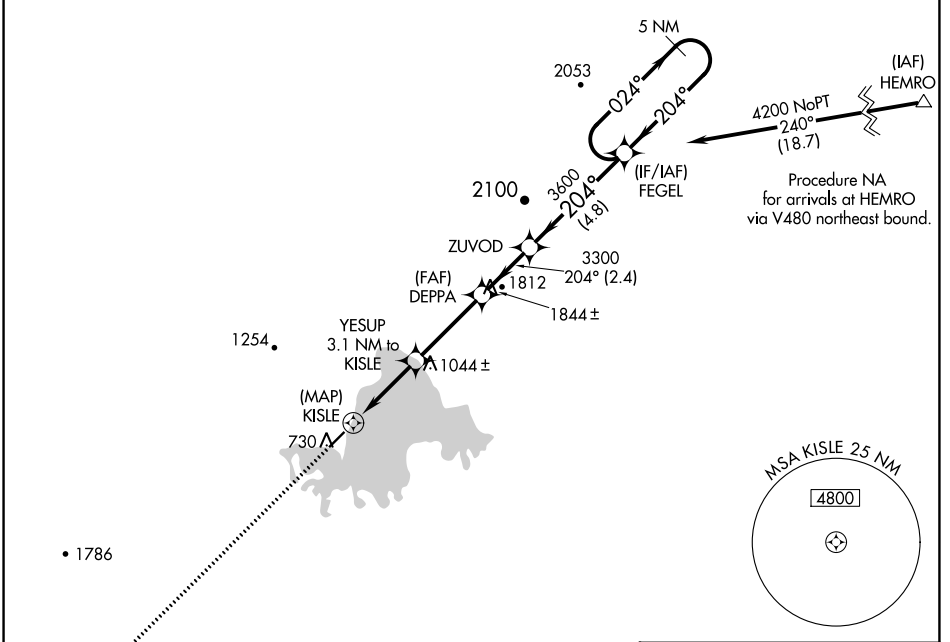
APP CRS 204°	Rwy Idg 4184 TDZE 682 Apt Elev 682
------------------------	---

RNAV (GPS) RWY 21

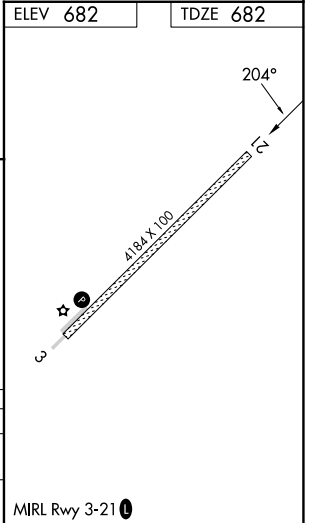
MINCHUMINA (MHM) (P.M.H)

-37°C DME/DME RNP-0.3 NA. Circling NA west of Rwy 3-21.	MISSED APPROACH: Climb to 3400 direct BECAG and hold.
---	---

AWOS-3P 135.55	ANCHORAGE CENTER 120.9 319.2	FAIRBANKS RADIO 122.2	CTAF 122.9
--------------------------	--	---------------------------------	----------------------



ELEV 682	TDZE 682
3400 BECAG	FEGEL 5 NM Holding Pattern
YESUP 3.1 NM to KISLE	DEPPA ZUVOD
1.5 NM to KISLE	3300 3600
≤ 3.50° TCH 35°	204° 024° 4200
0.5 1.5 1.6 3.3 NM 2.4 NM 4.8 NM	
CATEGORY	A B C D
LNVA MDA	1460-1 778 (800-1) 1460-1½ 778 (800-1½) 1460-2½ 778 (800-2½)
CIRCLING	1460-1 778 (800-1) 1460-1½ 778 (800-1½) 1460-2½ 778 (800-2½)



AK, 16 MAY 2024 to 11 JUL 2024

AK, 16 MAY 2024 to 11 JUL 2024