

LOC/DME I-MWP 109.1 Chan 28	APP CRS 059°	Rwy Idg TDZE Apt Elev	7003 238 258
---	------------------------	-----------------------------	---

LOC RWY 6

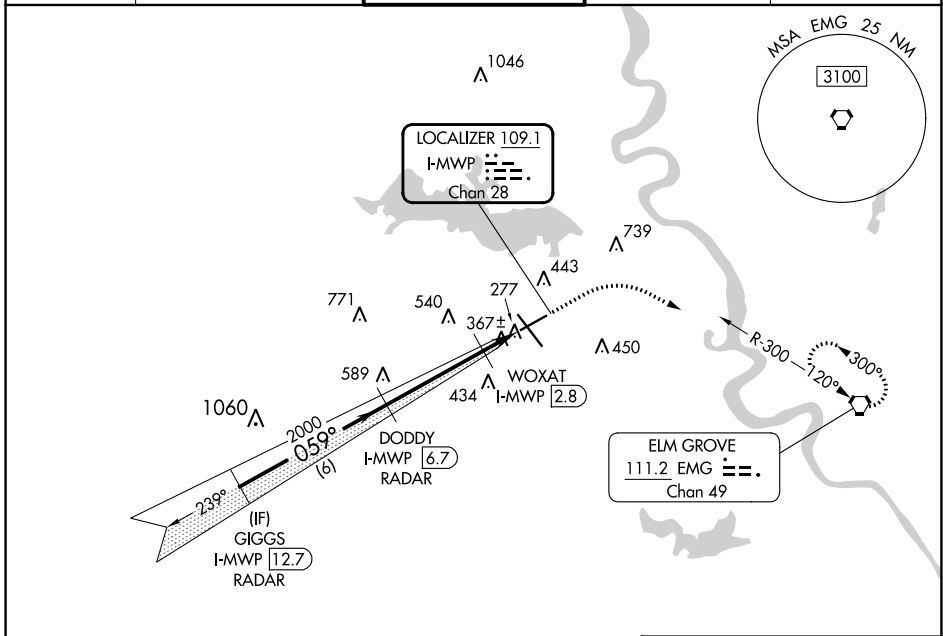
SHREVEPORT RGNL (SHV)

RADAR required for procedure entry. RADAR or DME required.

MISSED APPROACH: Climb to 700 then climbing right turn to 2000 direct EMG VORTAC and hold.

ASR Rwy 6 helicopter visibility reduction below 3/4 SM NA.

ATIS 128.45	SHREVEPORT APP CON 119.9 335.55	SHREVEPORT TOWER 121.4 236.775	GND CON 121.175 236.775	CLNC DEL 124.65
-----------------------	---	--	-----------------------------------	---------------------------



	GIGGS I-MWP RADAR (12.7)		DODDY I-MWP RADAR (6.7)		WOXAT I-MWP (2.8)		I-MWP (1.4)		EMG	
	2000		2000		740		740		700 2000	
	059°		059°		3.00° TCH 51		1.4		EMG	
	6 NM		4 NM							
CATEGORY	A	B	C	D	E					
S-LOC 6	740-1	502 (500-1)	740-1 3/8		502 (500-1 3/8)					
CIRCLING	760-1	502 (600-1)	980-2	1100-2 3/4	1100-3					
			722 (800-2)	842 (900-2 3/4)	842 (900-3)					
WOXAT FIX MINIMUMS										
S-LOC 6	620-1	382 (400-1)	620-1 1/8		382 (400-1 1/8)					
CIRCLING	760-1	502 (600-1)	980-2	1100-2 3/4	1100-3					
			722 (800-2)	842 (900-2 3/4)	842 (900-3)					

ELEV 258	TDZE 238
REIL Rwy 6 and 24	
HIRL Rwy 14-32	
MIRL Rwy 6-24	
TDZ/CL Rwy 14	
FAF to MAP 5.4 NM	
Knots	60 90 120 150 180
Min:Sec	5:24 3:36 2:42 2:10 1:48

SC-4, 16 MAY 2024 to 13 JUN 2024

SC-4, 16 MAY 2024 to 13 JUN 2024