

REDSTONE ARSENAL, ALABAMA

RNAV (GPS) RWY 17

WAAS CH 45638 W17A	APCH CRS 173°	Rwy ldg TDZE Arpt Elev	7300 685 685
--------------------------	------------------	------------------------------	--------------------

AL-703 (USA)

REDSTONE AAF (KHUA)

RNP APCH - GPS



MISSED APPROACH: Climb to 3000 direct FASOV and hold.

▼ * When ALS inop, increase CAT ABCD vis to 1 1/4 miles; increase CAT E vis to 1 1/2 miles.
 ** When ALS inop, increase CAT CDE vis to 1 3/8 miles.

ATIS 120.65	HUNTSVILLE APP CON/DEP CON 125.6 354.1	TOWER* 126.95 (CTAF) 290.275	PAR
----------------	---	---------------------------------	-----

*** Circling not authorized E of Rwy 17-35.

Visibility reduction by helicopters below 1 mile not authorized.

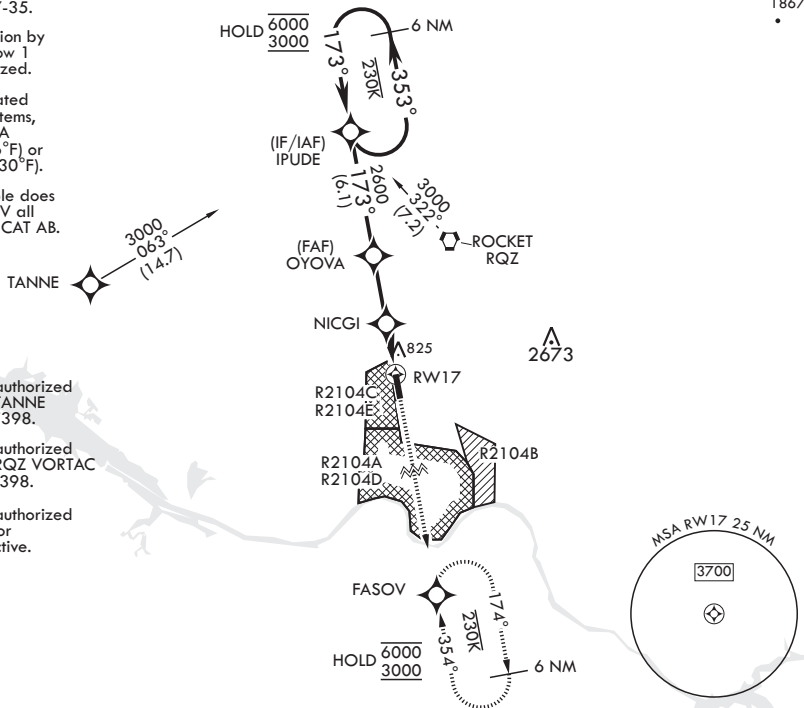
For uncompensated Baro-VNAV systems, LNAV/VNAV NA below -9°C (16°F) or above 54°C (130°F).

Inoperative table does not apply to LPV all CAT and LNAV CAT AB.

Procedure not authorized for arrivals at TANNE westbound on T398.

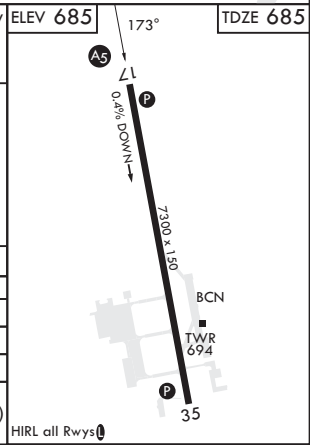
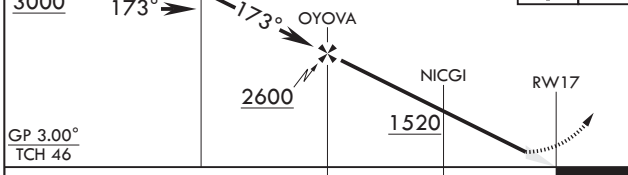
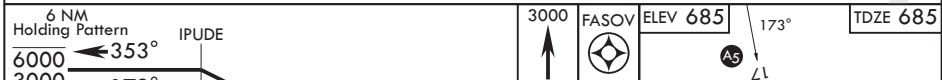
Procedure not authorized for arrivals at RQZ VORTAC eastbound on T398.

Procedure not authorized when R2104A or R2104C are active.



SE-4, 16 MAY 2024 to 13 JUN 2024

SE-4, 16 MAY 2024 to 13 JUN 2024



CATEGORY	A	B	C	D	E
LPV DA	935-1		250	(300-1)	
LNAV/VNAV DA*	1113-1		428	(500-1)	
LNAV MDA**	1180-1		495	(500-1)	
C CIRCLING***	1200-1 515 (600-1)	1240-1 555 (600-1)	1480-2 1/4 795 (800-2 1/4)	1740-3 1055 (1100-3)	

REDSTONE ARSENAL, ALABAMA

34°41'N - 86°41'W

REDSTONE AAF (KHUA)

Amdt 2 05OCT23

RNAV (GPS) RWY 17