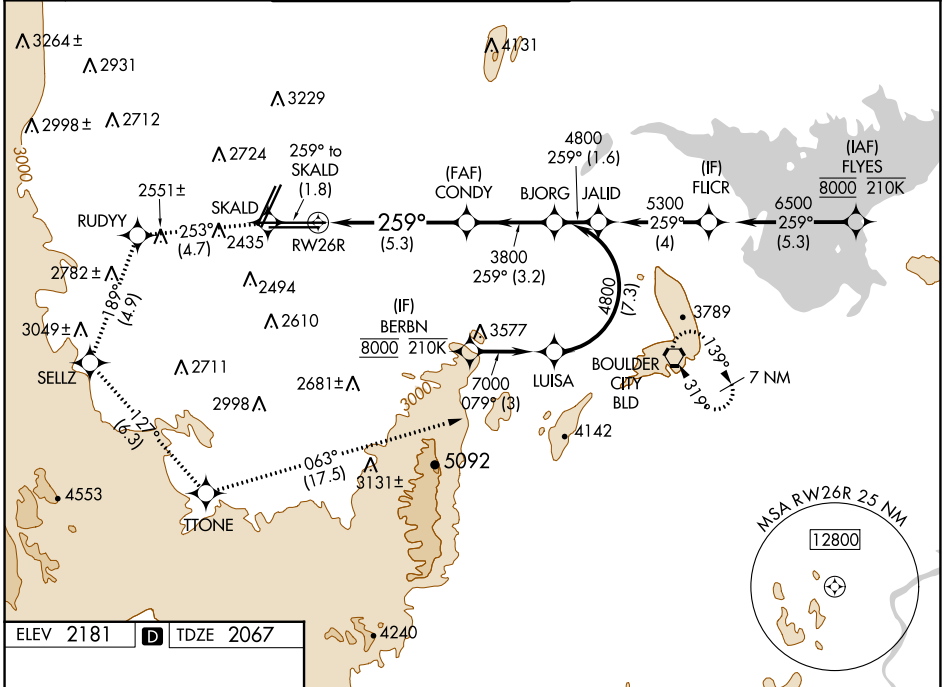


| | | |
|-------------|----------|--------------|
| APP CRS | Rwy Idg | 12638 |
| 259° | TDZE | 2067 |
| | Apt Elev | 2181 |

RNAV (RNP) RWY 26R

HARRY REID INTL (LAS)

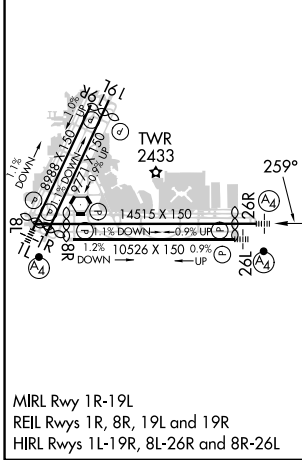
| | | | | | | |
|---|---|---|---|--|--------------|-------|
| RNP AR APCH-GPS. | | MALS | MISSED APPROACH: Cimb to 7000 on the RNAV missed approach route to BLD VORTAC and hold. * Missed approach requires minimum climb of 230 feet per NM to 3200. | | | |
| For uncompensated Baro-VNAV systems, procedure NA below -1°C or above 54°C. | | | | | | |
| D-ATIS | LAS VEGAS APP CON | LAS VEGAS TOWER | | GND CON | CLNC DEL | CPDLC |
| 132.4 | 125.025 379.15 (West) 119.775 282.2 (East) | 118.75 257.8 (Rwy 1L/19R, 1R/19L) 119.9 257.8 (Rwy 8L/26R, 8R/26L) | | 121.1 270.8 E of 1R/19L 121.9 254.3 W of 1R/19L | 118.0 | |



SW-4, 16 MAY 2024 to 13 JUN 2024

SW-4, 16 MAY 2024 to 13 JUN 2024

| | | |
|-----------|----------|-----------|
| ELEV 2181 | D | TDZE 2067 |
|-----------|----------|-----------|



| | | | | | |
|---|----------|---------|---------------|--------------------|---------|
| 7000 | SKALD | RUDYY | SELLZ | TTONE | BLD |
| ↑ | ◆ | tr 253° | ◆ | tr 127° | ◆ |
| fr 259° | | | fr 189° | | fr 063° |
| VGSI and RNAV glidepath not coincident (VGSI Angle 3.00/TCH 84). See planview for multiple IF locations. | | | | | |
| CONDY | | BJORG | | | |
| 3800 | | 4800 | | GP 3.00° TCH 60 | |
| -5.3 NM | | -3.2 NM | | | |
| CATEGORY | A | B | C | D | |
| RNP 0.30 DA* | 2457-7/8 | | 390 (300-7/8) | | |
| RNP 0.30 DA | 2508-1 | | 441 (400-1) | | |
| AUTHORIZATION REQUIRED | | | | | |