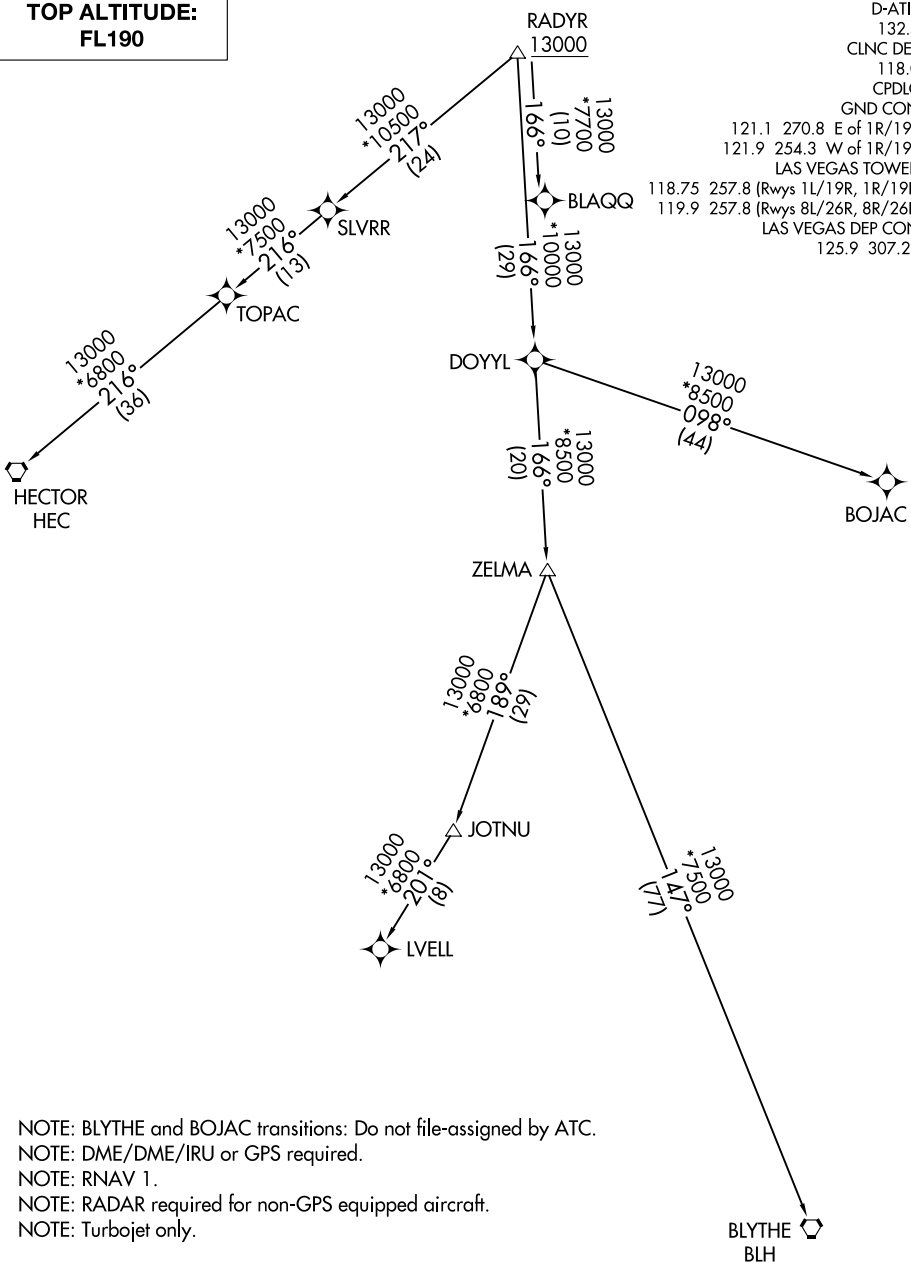


RADYR TWO DEPARTURE (RNAV) Transition Routes

**TOP ALTITUDE:  
FL190**

D-ATIS 132.4  
CLNC DEL 118.0  
CPDLC  
GND CON 121.1 270.8 E of 1R/19L  
121.9 254.3 W of 1R/19L  
LAS VEGAS TOWER  
118.75 257.8 (Rwys 1L/19R, 1R/19L)  
119.9 257.8 (Rwys 8L/26R, 8R/26L)  
LAS VEGAS DEP CON 125.9 307.25



SW-4, 16 MAY 2024 to 13 JUN 2024

SW-4, 16 MAY 2024 to 13 JUN 2024

NOTE: BLYTHE and BOJAC transitions: Do not file-assigned by ATC.  
NOTE: DME/DME/IRU or GPS required.  
NOTE: RNAV 1.  
NOTE: RADAR required for non-GPS equipped aircraft.  
NOTE: Turbojet only.

NOTE: Chart not to scale.

(NARRATIVE ON FOLLOWING PAGE)

RADYR TWO DEPARTURE (RNAV) Transition Routes