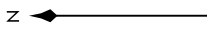


N11Z THREE DEPARTURE (RNAV) Departure Routes

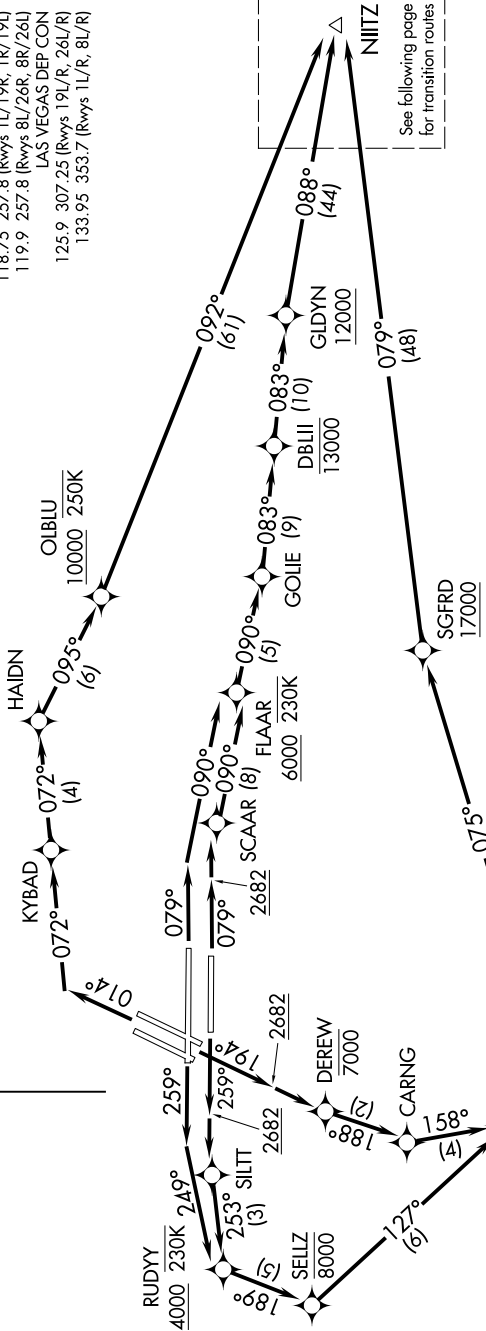
SW-4, 16 MAY 2024 to 13 JUN 2024

TOP ALTITUDE:
FL190

- NOTE: RADAR required for non-GPS equipped aircraft.
- NOTE: Turbojets only.
- NOTE: DME/DME/IRU or GPS required.
- NOTE: RNAV 1.
- NOTE: If unable to accept climb rates, advise ATC on initial contact.



- D-ATIS 132.4
- CINC DEL 118.0
- CPDLC 118.0
- GND CON 121.1 270.8 E of 1R/19L
- 121.9 254.3 W of 1R/19L
- LAS VEGAS TOWER 118.75 257.8 (Rwys 1L/19R, 1R/19L)
- 119.9 257.8 (Rwys 8L/26R, 8R/26L)
- LAS VEGAS DEP CON 125.9 307.25 (Rwys 19L/R, 26L/R)
- 133.95 353.7 (Rwys 1L/R, 8L/R)



TAKEOFF MINIMUMS
 Rwys 1L/R: Standard with minimum climb of 500' per NM to 2682 then 280' per NM to 4800.
 Rwys 8L/R: Standard with minimum climb of 500' per NM to 2682.
 Rwys 19L/R: Standard with minimum climb of 500' per NM to 2682 then 270' per NM to 6200.
 Rwys 26L/R: Standard with minimum climb of 500' per NM to 2682 then 240' per NM to 5000.

NOTE: Chart not to scale.

(CONTINUED ON FOLLOWING PAGE)

SW-4, 16 MAY 2024 to 13 JUN 2024

N11Z THREE DEPARTURE (RNAV) Departure Routes