

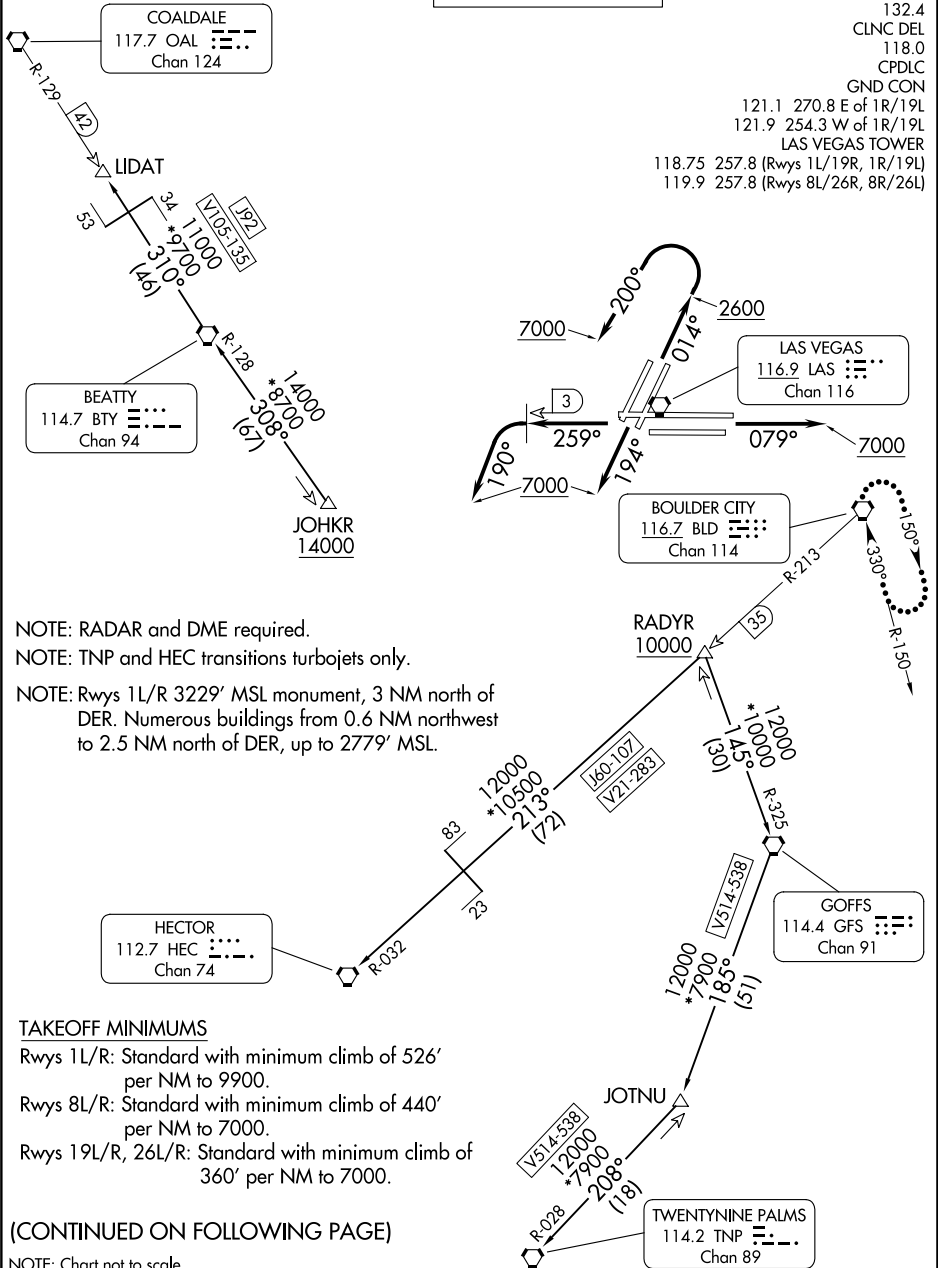
MCCARRAN SIX DEPARTURE

AL-662 (FAA)

HARRY REID INTL (LAS)
LAS VEGAS, NEVADA

**TOP ALTITUDE:
ASSIGNED BY ATC**

LAS VEGAS DEP CON
125.9 307.25
D-ATIS
132.4
CLNC DEL
118.0
CPDLC
GND CON
121.1 270.8 E of 1R/19L
121.9 254.3 W of 1R/19L
LAS VEGAS TOWER
118.75 257.8 (Rwys 1L/19R, 1R/19L)
119.9 257.8 (Rwys 8L/26R, 8R/26L)



NOTE: RADAR and DME required.
NOTE: TNP and HEC transitions turbojets only.
NOTE: Rwys 1L/R: Standard with minimum climb of 526' per NM to 9900.
Rwys 8L/R: Standard with minimum climb of 440' per NM to 7000.
Rwys 19L/R, 26L/R: Standard with minimum climb of 360' per NM to 7000.

TAKEOFF MINIMUMS

Rwys 1L/R: Standard with minimum climb of 526' per NM to 9900.
Rwys 8L/R: Standard with minimum climb of 440' per NM to 7000.
Rwys 19L/R, 26L/R: Standard with minimum climb of 360' per NM to 7000.

(CONTINUED ON FOLLOWING PAGE)

NOTE: Chart not to scale.

SW-4, 16 MAY 2024 to 13 JUN 2024

SW-4, 16 MAY 2024 to 13 JUN 2024

MCCARRAN SIX DEPARTURE