

LOC/DME FAS <b>110.3</b> Chan <b>40</b>	APP CRS <b>259°</b>	Rwy Idg <b>26R 26L</b> TDZE <b>12638 10526</b> <b>2067 2069</b> Apt Elev <b>2181 2181</b>
---	------------------------	---

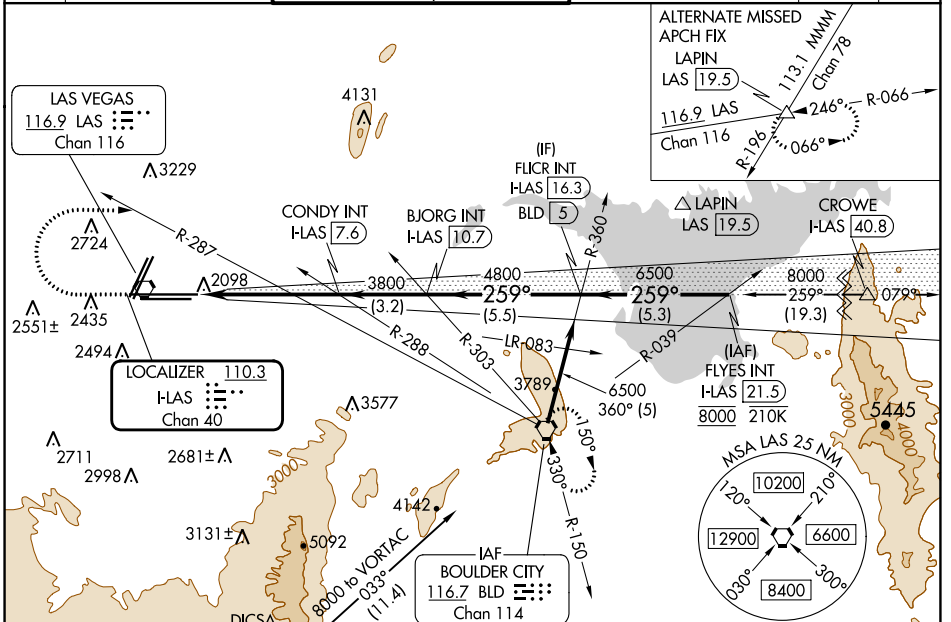
# ILS Z or LOC Z RWY 26R

HARRY REID INTL (LAS)

**⚠** For inop ALS, increase S-ILS-26R all Cats visibility to ½ SM, S-LOC-26R Cat E visibility to 1 ½ SM. Inop table does not apply to sidestep 26L.

MALS Rwy 26R 	MALSF Rwy 26L 	MISSED APPROACH: Climb to 3200 then climbing right turn to 6000 on heading 079° and on BLD R-287 to BLD VORTAC and hold, continue climb-in-hold to 6000.
------------------	-------------------	--

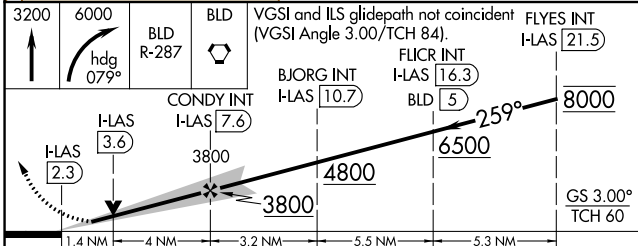
D-ATIS <b>132.4</b>	LAS VEGAS APP CON <b>125.025 379.15</b> (West) <b>119.775 282.2</b> (East)	LAS VEGAS TOWER <b>118.75 257.8</b> (Rwy 1L/19R, 1R/19L) <b>119.9 257.8</b> (Rwy 8L/26R, 8R/26L)	GND CON <b>121.1 270.8</b> E of 1R/19L <b>121.9 254.3</b> W of 1R/19L	CLNC DEL <b>118.0</b>	CPDLC
------------------------	--	--	---	--------------------------	-------



SW-4, 16 MAY 2024 to 13 JUN 2024

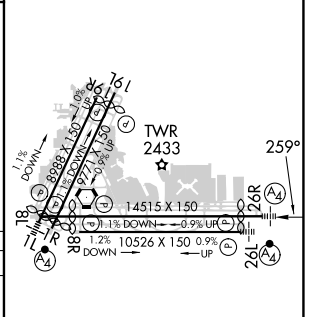
SW-4, 16 MAY 2024 to 13 JUN 2024

Procedure NA for arrivals on BLD VORTAC  
airway radials 332 CW 016.



CATEGORY	A	B	C	D	E
S-ILS 26R	2334-¾ 267 (200-¾)				
S-LOC 26R	2560-¾ 493 (400-¾)		2560-1½ 493 (400-1½)		
SIDESTEP 26L	2560-1 491 (400-1)	2560-1½ 491 (400-1½)		2560-2 491 (400-2)	
CIRCLING	3020-1¼ 839 (900-1¼)	3060-1¼ 879 (900-1¼)	3100-2¾ 919 (1000-2¾)	3540-3 1359 (1400-3)	

ELEV 2181	<b>D</b>	TDZE 26R 2067	TDZE 26L 2069
-----------	----------	---------------	---------------



MIRL Rwy 1R-19L	REIL Rws 1R, 8R, 19L and 19R				
HIRL Rws 1L-19R, 8L-26R and 8R-26L					
FAF to MAP 5.3 NM					
Knots	60	90	120	150	180
Min:Sec	5:18	3:32	2:39	2:07	1:46