

MOUNTAIN TWO DEPARTURE

AL-582 (FAA)

SEATTLE-TACOMA INTL (SEA)
SEATTLE, WASHINGTON

NW-1, 16 MAY 2024 to 13 JUN 2024

SEATTLE DEP CON
119.2 284.7

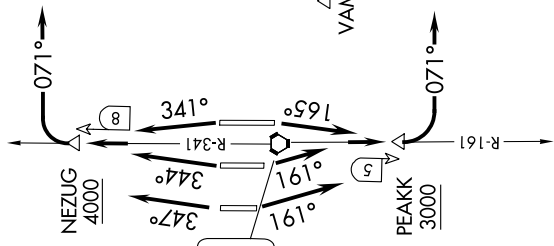
RADAR and DME required.

ALPSE

PRINCETON
113.9 YDC
Chan 86

**TOP ALTITUDE:
ASSIGNED BY ATC**

PAINE
110.6 PAE
Chan 43



TAKEOFF MINIMUMS

- Rwy 16L: Standard with minimum climb of 560' per NM to 3000.
- Rwy 16C: Standard with minimum climb of 515' per NM to 3000.
- Rwy 16R: Standard with minimum climb of 500' per NM to 3000.
- Rwys 34L/C/R: Standard with minimum climb of 580' per NM to 4000.

SPOKANE
115.5 GEG
Chan 102

EPHRATA
112.6 EPH
Chan 73

MULLAN PASS
117.8 MIP
Chan 125

MOSES LAKE
115.0 MWH
Chan 97

ELLENSBURG
117.9 ELN
Chan 126

ZADON

ZELAK

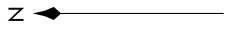
MODDA

NORMY

BANDR

VAMPS

STEVES



(CONTINUED ON FOLLOWING PAGE)

NOTE: Chart not to scale

NW-1, 16 MAY 2024 to 13 JUN 2024