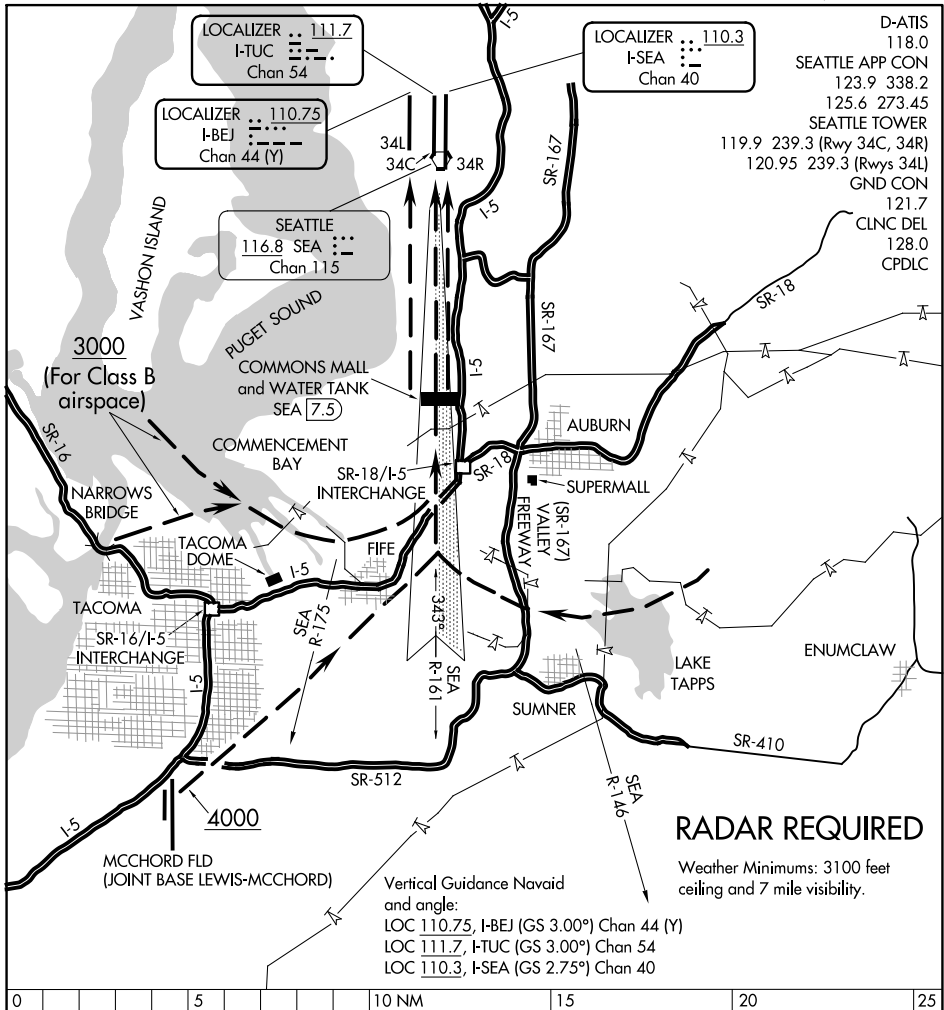


MALL VISUAL RWY 34R/C/L

SEATTLE-TACOMA INTL (SEA)
SEATTLE, WASHINGTON

AL-582 (FAA)



NW-1, 16 MAY 2024 to 13 JUN 2024

NW-1, 16 MAY 2024 to 13 JUN 2024

RADAR REQUIRED

Weather Minimums: 3100 feet ceiling and 7 mile visibility.

Vertical Guidance Navaid and angle:
 LOC 110.75, I-BEJ (GS 3.00°) Chan 44 (Y)
 LOC 111.7, I-TUC (GS 3.00°) Chan 54
 LOC 110.3, I-SEA (GS 2.75°) Chan 40

MALL VISUAL APPROACH RWY 34R/C/L

When the ceiling is at least 3100' and visibility is at least 7 miles, aircraft may be vectored towards Commencement Bay or McChord Fld or Lake Tapps for a Mall Visual Runway 34R/C/L Approach. When cleared for this approach; proceed inbound visually using the depicted landmarks to the centerline of runway 34R/C/L. Turn final before or over the interchange of State Road 18 (SR-18) and Interstate 5. Be established on the localizer or runway centerline at the Commons Mall and Water Tank (7.5 DME) and proceed visually to runway 34R/C/L.

MALL VISUAL RWY 34R/C/L

47°27'N-122°19'W

SEATTLE, WASHINGTON
SEATTLE-TACOMA INTL (SEA)