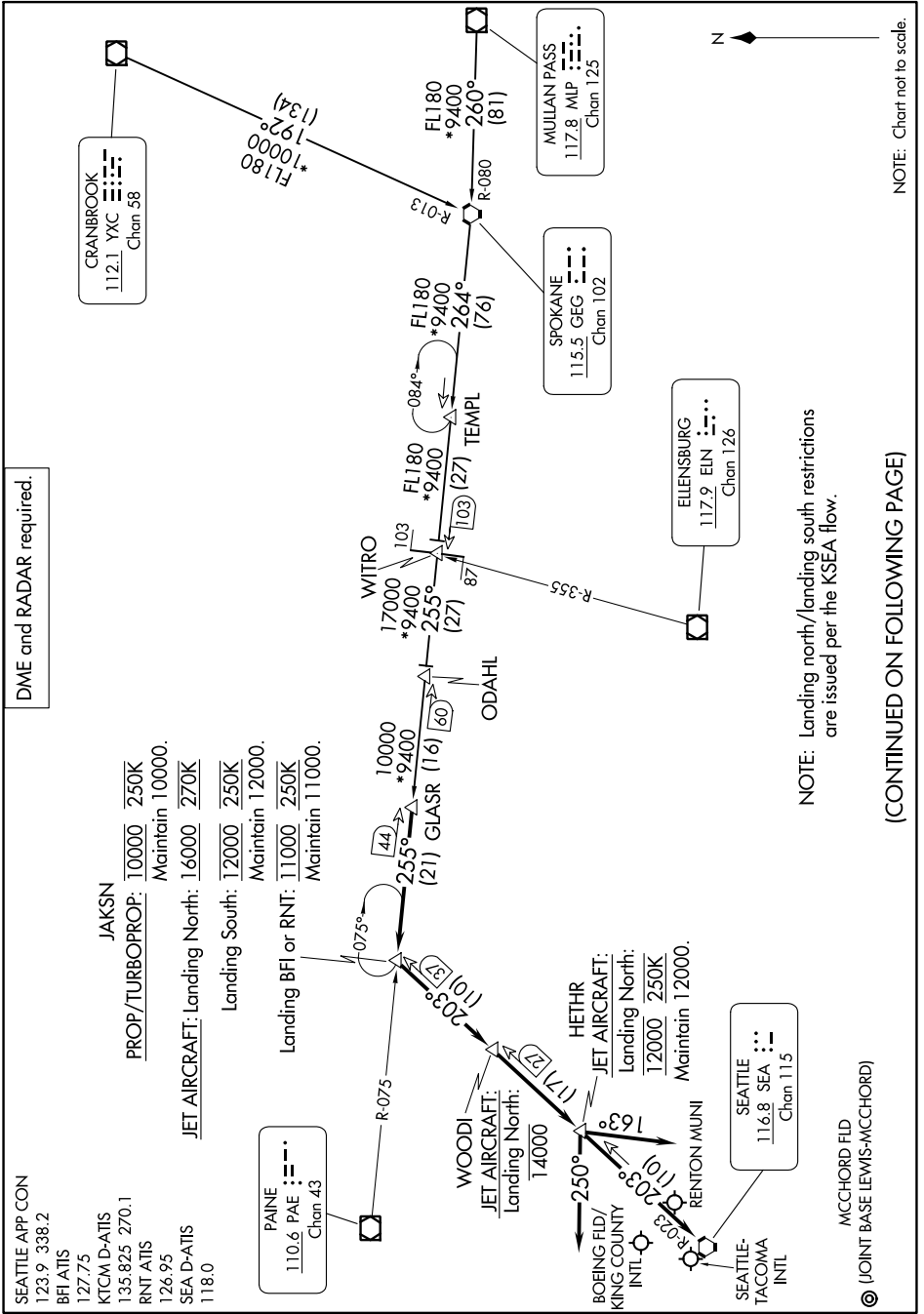


GLASR THREE ARRIVAL

AL-582 (FAA)

SEATTLE, WASHINGTON

NW-1, 16 MAY 2024 to 13 JUN 2024



NOTE: Chart not to scale.

NOTE: Landing north/landing south restrictions are issued per the KSEA flow.

(CONTINUED ON FOLLOWING PAGE)

NW-1, 16 MAY 2024 to 13 JUN 2024

GLASR THREE ARRIVAL

SEATTLE, WASHINGTON

© (JOINT BASE LEWIS-MCCORD)