

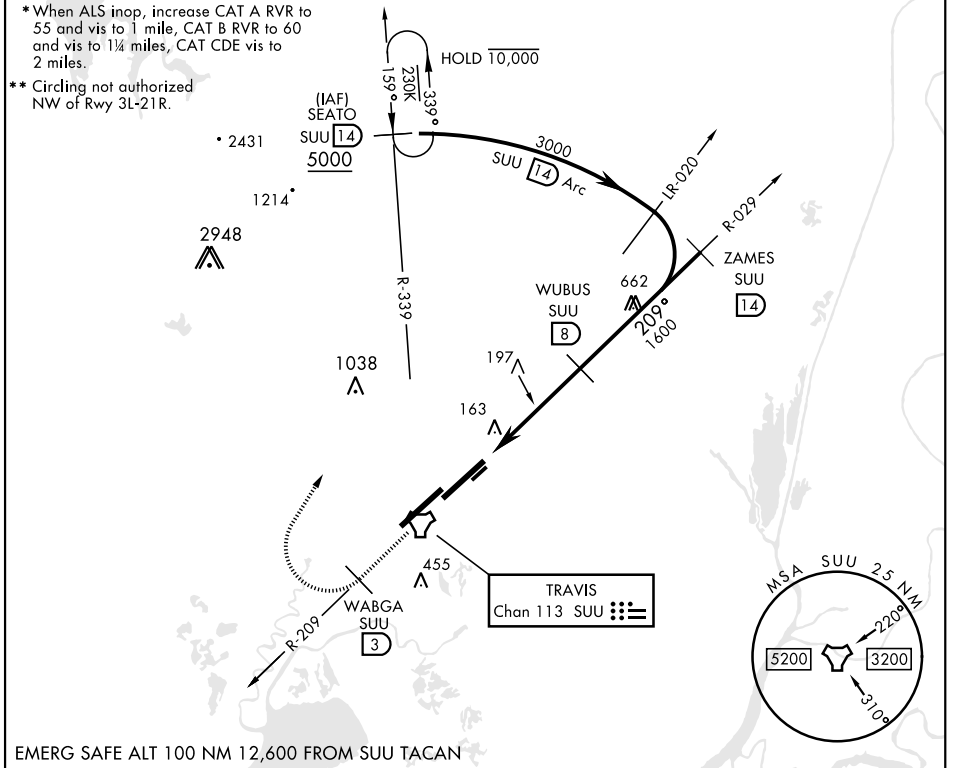
TACAN RWY 21L

TACAN SUU Chan 113	APCH CRS 209°	Rwy Idg 10,995 TDZE 58 Arprt Elev 63
------------------------------	-------------------------	---

[USAF]

TRAVIS AFB (KSUU)

RADAR required		ALS-2	MISSED APPROACH: Climb to 5000 via SUU TACAN R-209 to WABGA, then turn right hdg 015° to intercept SUU R-339 to SEATO and hold, continue climb in hold to 5000.		
ATIS 135.55 292.125	APP CON 119.9 322.325 (S) 126.6 281.45 (N)	TOWER 120.75 254.4	GND CON 121.8 289.4	CLNC DEL 127.55 335.8	



EMERG SAFE ALT 100 NM 12,600 FROM SUU TACAN

5000 SUU R-209	SEATO SUU 14	ELEV 63	TDZE 58		
CATEGORY	A	B	C	D	E
S-21L*	800/24 742 (800-½)	800/40 742 (800-¾)	800-1¼	742 (800-¾)	
CIRCLING**	800-1 737 (800-1)	800-1¼ 737 (800-1¼)	800-2 737 (800-2)	1200-3	1137 (1200-3)
HIRL Rwy 3R-21L MRL Rwy 032° - 212° TDZL/CL Rwy 3R, 21L					

TACAN RWY 21L

SW-2, 16 MAY 2024 to 13 JUN 2024

SW-2, 16 MAY 2024 to 13 JUN 2024