

FAIRFIELD, CALIFORNIA

# RNAV (GPS) RWY 03R

WAAS CH <b>98057</b> W03B	APCH CRS <b>035°</b>	Rwy ldg TDZE <b>59</b> Arprt Elev <b>63</b>	<b>10,995</b>
---------------------------------	-------------------------	---	---------------

- (USAF)

TRAVIS AFB (KSUU)

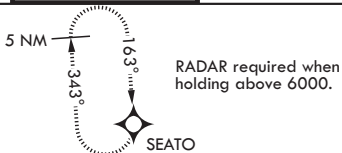
RNP APCH

MISSED APPROACH: Climb to 4500 direct FOLNO, track 308° to SEATO and hold, continue climb-in-hold to 4500.

\* Circling NA NW of RWY 3L-21R.

ATIS <b>135.55 292.125</b>	APP CON <b>119.9 322.325 (S)</b> <b>126.6 281.45 (N)</b>	TOWER <b>120.75 254.4</b>	GND CON <b>121.8 289.4</b>	CLNC DEL <b>127.55 335.8</b>
-------------------------------	--	------------------------------	-------------------------------	---------------------------------

For uncompensated Baro-VNAV systems, LNAV/VNAV NA below -15°C or above 54°C.



2783

FOLNO

WUSMO

(FAF) LUDEC

HEIDY

2500

1900

035°

1159

(IF/IAF) HABAL

3000

2500

035°

1159

2500

035°

1159

2500

035°

1159

2500

035°

1159

2500

035°

1159

2500

035°

1159

2500

035°

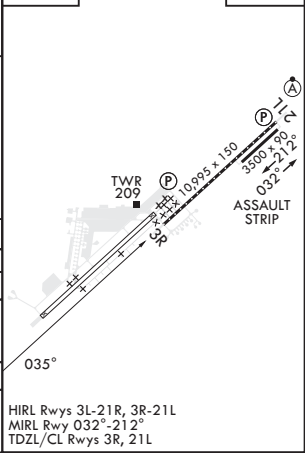
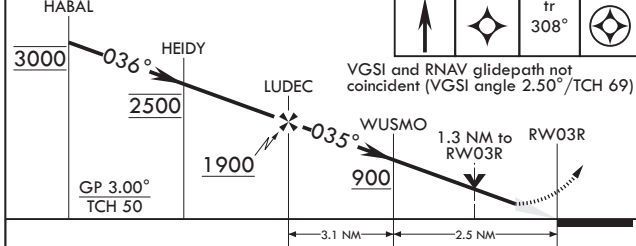
1159

MSA RWY03R 2.5 NM

5100

EMERG SAFE ALT 100 NM 12,600

HABAL	4500	FOLNO	tr 308°	SEATO	ELEV 63	TDZE 59
-------	------	-------	---------	-------	---------	---------



CATEGORY	A	B	C	D	E
LPV DA	259/40		200	(200-¾)	
LNAV/VNAV DA	340/45 281 (300-¾)	351/45 292 (300-¾)	359/45 300 (300-¾)	370/45	311 (400-¾)
LNAV MDA	460/55	401 (400-1)	460/60	401	(400-1½)
<b>C</b> CIRCLING*	560-1 497 (500-1)	660-1 597 (600-1)	1100-3 1037 (1100-3)	1200-3 1137 (1200-3)	

HIRL Rwys 3L-21R, 3R-21L  
MIRL Rwy 032°-212°  
TDZL/CL Rwys 3R, 21L

FAIRFIELD, CALIFORNIA

38°16'N - 121°55'W

TRAVIS AFB (KSUU)

Orig 27JAN22

# RNAV (GPS) RWY 03R

SW-2, 16 MAY 2024 to 13 JUN 2024

SW-2, 16 MAY 2024 to 13 JUN 2024