

PEBLL TWO ARRIVAL (RNAV)

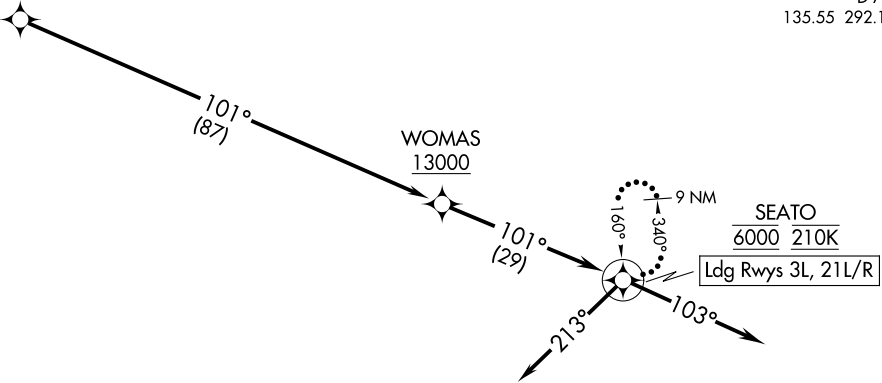
AL-488 (FAA)

TRAVIS AFB (KSUU)
FAIRFIELD, CALIFORNIA

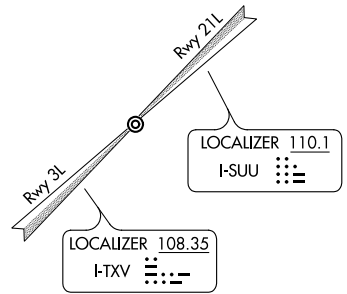
RNAV 1 - DME/DME/IRU or GPS.
RADAR required.

TRAVIS APP CON
126.6 281.45 (N)
119.9 322.325 (S)
TRAVIS TOWER
120.75 254.4
GND CON
121.8 289.4
D-ATIS
135.55 292.125

PEBLL
FL290



SEATO
6000 210K
Ldg Rwys 3L, 21L/R



NOTE: Chart not to scale.

ARRIVAL ROUTE DESCRIPTION

From PEBLL on track 101° to cross WOMAS at or above 13000.

LANDING RUNWAY 3L: From WOMAS on track 101° to cross SEATO at 6000 and at 210K, then on heading 213°. Expect RADAR vectors to final approach course.

LANDING RUNWAY 21L/R: From WOMAS on track 101° to cross SEATO at 6000 and at 210K, then on heading 103°. Expect RADAR vectors to final approach course.

LOST COMMUNICATIONS: From SEATO, execute ILS or LOC RWY 21L or TACAN RWY 3L approach. If unable, hold at SEATO as depicted, maintain 6000.

PEBLL TWO ARRIVAL (RNAV)

(PEBLL.PEBLL2) 19MAY22

FAIRFIELD, CALIFORNIA
TRAVIS AFB (KSUU)

SW-2, 16 MAY 2024 to 13 JUN 2024

SW-2, 16 MAY 2024 to 13 JUN 2024