

FAIRFIELD, CALIFORNIA

ILS or LOC or RNAV (GPS) RWY 21L

TRAVIS AFB (KSUU)

SBAS Chan 62106 W21A	APCH CRS 215°	Rwy Idg 10,995 TDZE 58 Arprt Elev 63
--	-------------------------	---

[USAF]

RNP APCH. RNAV1-GPS or RADAR required for ILS, LOC.

RADAR required for CAT E aircraft for full procedure off of SEATO.

ALSF-2

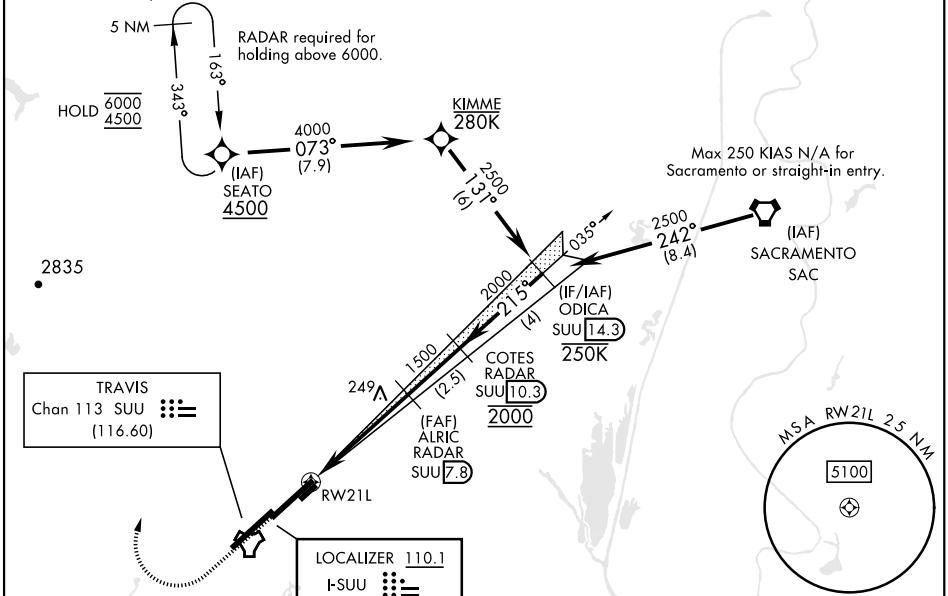


MISSED APPROACH: Climb to 2200 then climbing right turn to 4500 direct SEATO and hold, continue climb in hold to 4500.

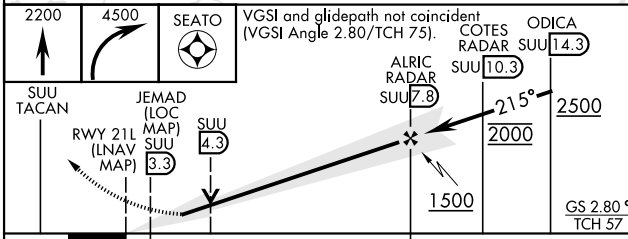
- * When ALS inop, increase RVR to 40, vis to 3/4 miles.
- ** When ALS inop, increase CAT AB RVR to 55, vis to 1 mile; CAT CDE vis to 1 3/8 miles.
- ***Circling not authorized NW of Rwy 3L-21R.

ATIS 135.55 292.125	APP CON 119.9 322.325 (S) 126.6 281.45 (N)	TOWER 120.75 254.4	GND CON 121.8 289.4	CLNC DEL 127.55 335.8
-------------------------------	--	------------------------------	-------------------------------	---------------------------------

† When TDZ/CL inop, increase RVR to 24, RVR 18 authorized use of FD or AP or HUD to DA.

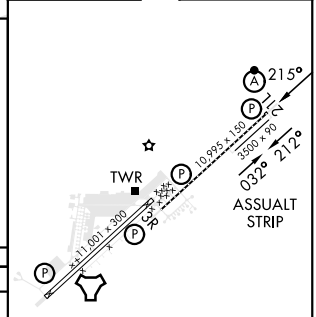


EMERG SAFE ALT 100 NM 13,000



ELEV	63	TDZE	58
------	----	------	----

CATEGORY	A	B	C	D	E
S-ILS 21L**	258/18		200	(200-1/2)	
LPV DA**	258/18		200	(200-1/2)	
S-LOC 21L**	500/24	442 (500-1/2)	500/45	442	(500-7/8)
LNNAV MDA**	500/24	442 (500-1/2)	500/45	442	(500-7/8)
CIRCLING***	560-1 497 (500-1)	660-1 597 (600-1)	1100-3 1037(1100-3)	1200-3	1137 (1200-3)



HIRL Rwy 3R-21L					
MIRL Rwy 032° - 212°					
TDZL/CL Rwy 3R, 21L					
FAF to MAP 4.5 NM					
Knots	60	90	120	150	180
Min:Sec	4:30	3:00	2:15	1:48	1:30

FAIRFIELD, CALIFORNIA
Orig 19MAY22

38°16'N-121°55'W

TRAVIS AFB (KSUU)

ILS or LOC or RNAV (GPS) RWY 21L

SW-2, 16 MAY 2024 to 13 JUN 2024

SW-2, 16 MAY 2024 to 13 JUN 2024