

# BESSA ONE DEPARTURE (RNAV) (BESSA1 • BESSA)

TRAVIS AFB (KSUU)  
FAIRFIELD, CALIFORNIA

SL-488 [USAF]

Rwy	Knots	60	120	180	240	300	360
*3R (C)	V/V(fpm)	201	402	603	804	1005	1206
† 3R (C)	V/V(fpm)	295	590	885	1180	1475	1770
† 3L (C)	V/V(fpm)	299	598	897	1196	1495	1794
*21L/RC (C)	V/V(fpm)	220	440	660	880	1100	1320
†21R (C)	V/V(fpm)	277	554	831	1108	1385	1662
†21L (C)	V/V(fpm)	280	560	840	1120	1400	1680

† ATC Climb Rate

\* Minimum

(C) to 500

(C) to BESSA to 8000

(C) to 4000

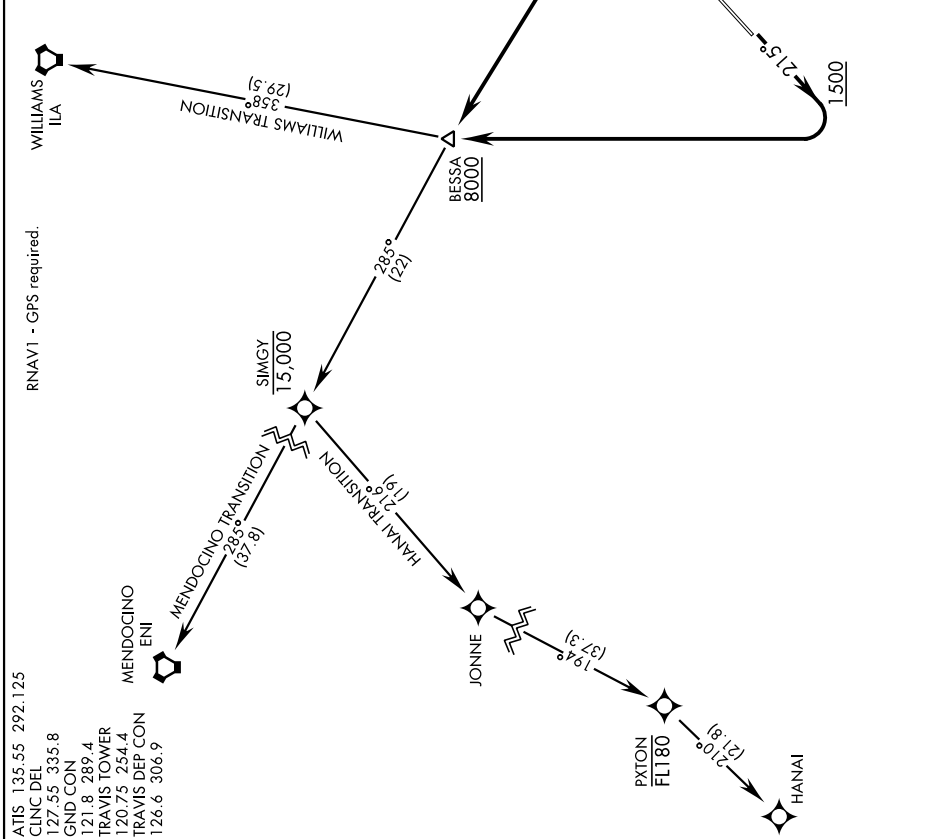
### DEPARTURE ROUTE DESCRIPTION

TAKE-OFF RWY 3L/R: Climb on heading 035° to 1500, then left turn direct to cross BESSA at or above 8000. Thence...

TAKE-OFF RWY 21L/R: Climb on heading 215° to 1500, then right turn direct to cross BESSA at or above 8000. Thence...

...via assigned transition. Maintain ATC assigned altitude.

- HANAI TRANSITION (BESSA1.HANAI)
- MENDOCINO TRANSITION (BESSA1.ENI)
- WILLIAMS TRANSITION (BESSA1.ILA)



- ATIS 135.55 292.125
- CINC DEL 127.55 335.8
- GND CON 121.8 289.4
- TRAVIS TOWER 120.75 254.4
- TRAVIS DEP CON 126.6 306.9

# BESSA ONE DEPARTURE (RNAV) (BESSA1 • BESSA)

Orig 10SEP20

FAIRFIELD, CALIFORNIA  
TRAVIS AFB (KSUU)