

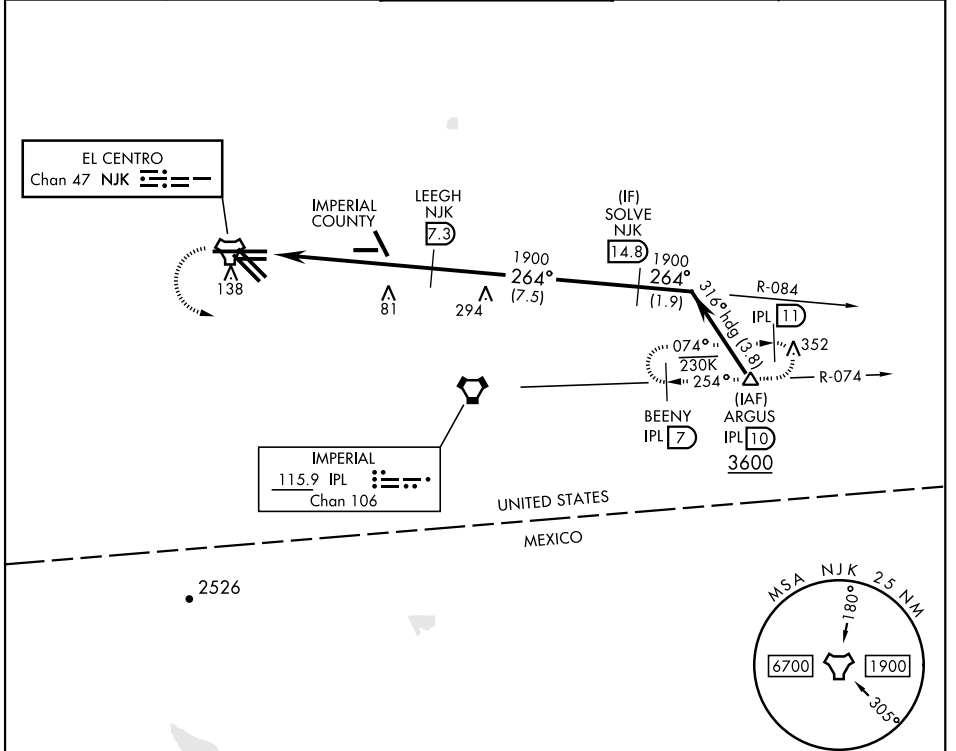
TACAN RWY 26

TACAN NJK Chan 47	APCH CRS 264°	Rwy Idg TDZE Arpt Elev 9503 -46 -42
-----------------------------	-------------------------	---

[USN]

EL CENTRO NAF (VRACIU FLD) (KNJK)

<p>▼ Circling to Rwy 30 NA at night.</p>		<p>MISSED APPROACH: Climb to 500, then climbing left turn to 2400 direct IPL VORTAC. Then direct BEENY via IPL R-074 and hold.</p>		
<p>ATIS ★ 269.275</p>	<p>APP CON/DEP CON 128.55 292.2</p>	<p>TOWER ★ 119.1 360.2</p>	<p>GND CON 121.9 254.35</p>	<p>CLNC DEL 340.2</p>



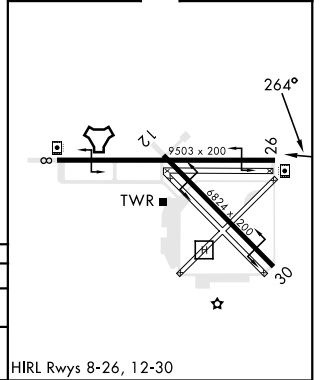
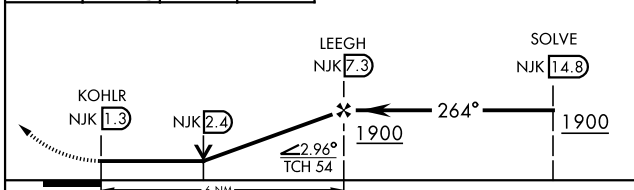
SW-3, 16 MAY 2024 to 13 JUN 2024

SW-3, 16 MAY 2024 to 13 JUN 2024

EMERG SAFE ALT 100 NM 17,000

500	2400	IPL R-074	BEENY IPL 7
-----	------	-----------	-------------

ELEV -42	TDZE -46
----------	----------



CATEGORY	A	B	C	D
S-26	380-1 426 (500-1)	380-1¼ 426 (500-1¼)		
CIRCLING	480-1 522 (600-1)	480-1½ 522 (600-1½)	520-2 562 (600-2)	

HIRL Rwys 8-26, 12-30

TACAN RWY 26