

EL CENTRO, CALIFORNIA

RNAV (GPS) RWY 8

WAAS CH 89932 W08A	APCH CRS 079°	Rwy ldg TDZE -46 Arpt Elev -42	9503
---------------------------------	-------------------------	--	-------------

- (USN)

EL CENTRO NAF (VRACIU FLD) (KNJK)

RNP APCH

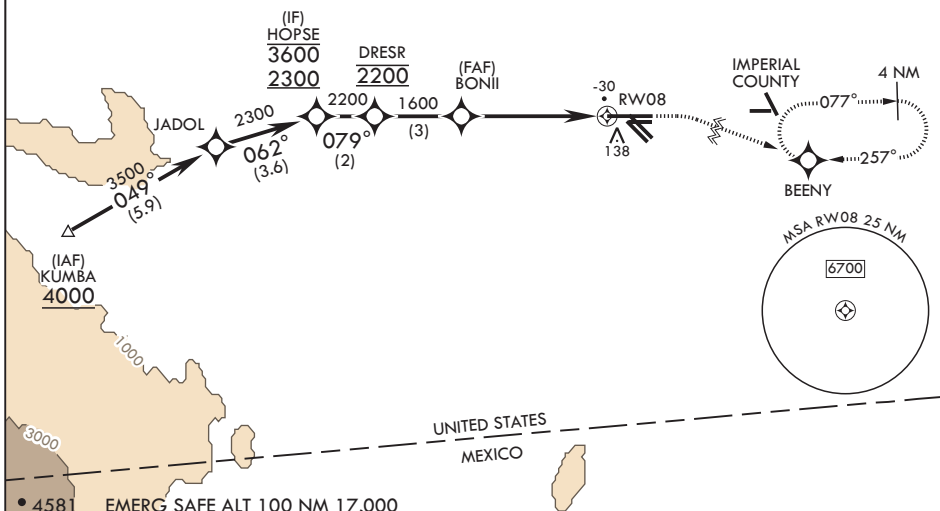
▼ Circling visibility reduction by helicopters NA.
When tower closed, increase visibility to 1 mile.

MISSED APPROACH: Climb to 800, then climbing right turn to 2400 direct BEENY and hold.

ATIS* 269.275	APP CON/DEP CON 128.55 292.2	TOWER* 119.1 360.2	GND CON 121.9 254.35	CLNC DEL 340.2
-------------------------	--	------------------------------	--------------------------------	--------------------------

Circling to Rwy 30 NA at night.

For uncompensated Baro-VNAV systems, LNAV/VNAV NA below -14°C (7°F) or above 54°C (129°F).



SW-3, 16 MAY 2024 to 13 JUN 2024

SW-3, 16 MAY 2024 to 13 JUN 2024

HOPSE 3600 2300	079°	DRESR 2200	BONII	1600	RWY 08	800	2400	BEENY	ELEV -42	TDZE -46
GP 3.00°						crs 079°				
TCH 50										
CATEGORY	A	B	C	D						
LPV DA	204-¾	250	(300-¾)							
LNAV/VNAV DA	204-¾ 250 (300-¾)	235-⅞ 281 (300-⅞)	249-⅞ 295 (300-⅞)	268-⅞ 314 (400-⅞)						
LNAV MDA	460-1	506 (600-1)	460-1½	506 (600-1½)						
C CIRCLING	480-1	522 (600-1)	480-1½ 522 (600-1½)	520-2 562 (600-2)						

HIRL Rwy 8-26, 12-30

EL CENTRO, CALIFORNIA

32°50'N - 115°40'W

EL CENTRO NAF (VRACIU FLD) (KNJK)

Orig 13JUL23

RNAV (GPS) RWY 8