

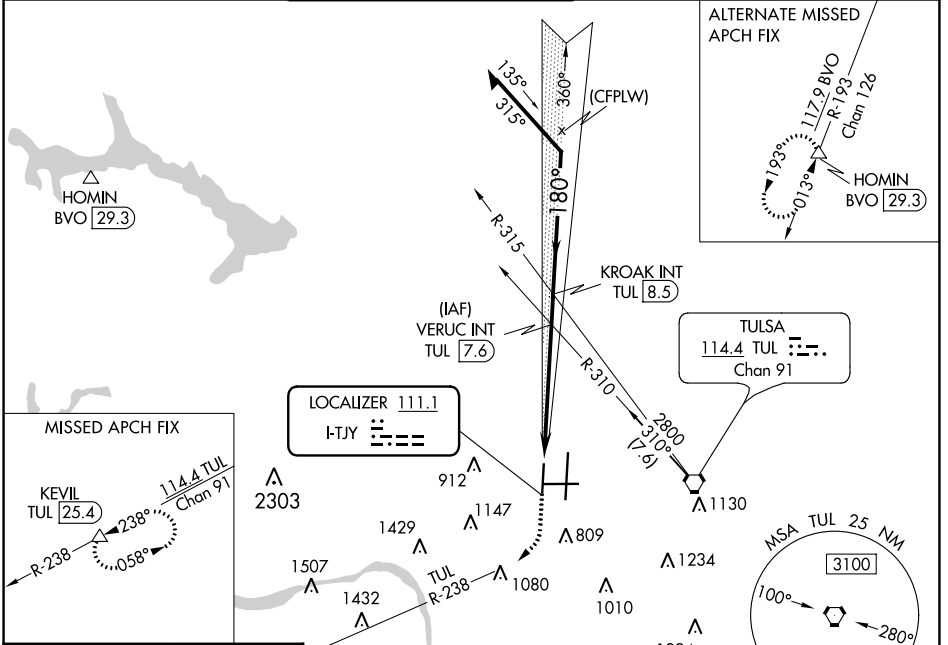
LOC I-TJY <b>111.1</b>	APP CRS <b>180°</b>	Rwy Idg TDZE Apt Elev <b>5501</b> <b>668</b> <b>678</b>
---------------------------	------------------------	--

# ILS or LOC RWY 18R

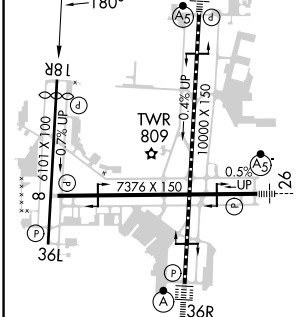
TULSA INTL (TUL)

**ASR** Simultaneous approach authorized. MISSED APPROACH: Climb to 1400 then climbing right turn to 2600 on TUL VORTAC R-238 to KEVIL INT/TUL 25.4 DME and hold.

D-ATIS <b>124.9 377.2</b>	TULSA APP CON <b>124.0 338.3</b>	TULSA TOWER <b>121.2 310.8</b> (Rwys 18L-36R, 8-26) <b>118.7 257.8</b> (Rwy 18R-36L)	GND CON <b>121.9 348.6</b>	CLNC DEL <b>134.05 284.7</b>
------------------------------	-------------------------------------	--	-------------------------------	---------------------------------



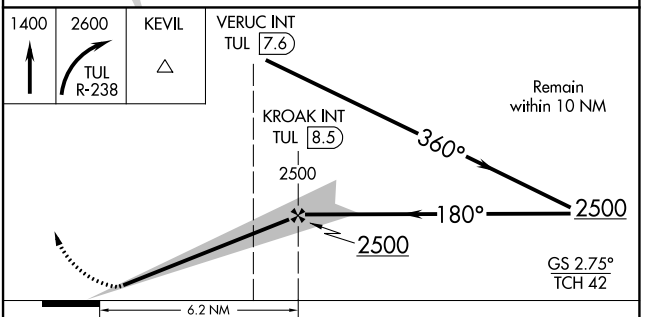
ELEV 678	<b>D</b>	TDZE 668
----------	----------	----------



TDZ/CL Rwy 36R  
HIRL Rwys 8-26, 18L-36R and 18R-36L  
REIL Rwys 8, 18R and 36L

FAF to MAP 6.2 NM

Knots	60	90	120	150	180
Min:Sec	6:12	4:08	3:06	2:29	2:04



CATEGORY	A	B	C	D
S-ILS 18R		868- <sup>3</sup> / <sub>4</sub>	200 (200- <sup>3</sup> / <sub>4</sub> )	
S-LOC 18R	1180-1	512 (600-1)	1180-1 <sup>3</sup> / <sub>8</sub> 512 (600-1 <sup>3</sup> / <sub>8</sub> )	
<input checked="" type="checkbox"/> CIRCLING	1180-1	502 (600-1)	1500-2 <sup>1</sup> / <sub>2</sub> 822 (900-2 <sup>1</sup> / <sub>2</sub> )	1520-2 <sup>3</sup> / <sub>4</sub> 842 (900-2 <sup>3</sup> / <sub>4</sub> )

SC-1, 16 MAY 2024 to 13 JUN 2024

SC-1, 16 MAY 2024 to 13 JUN 2024