

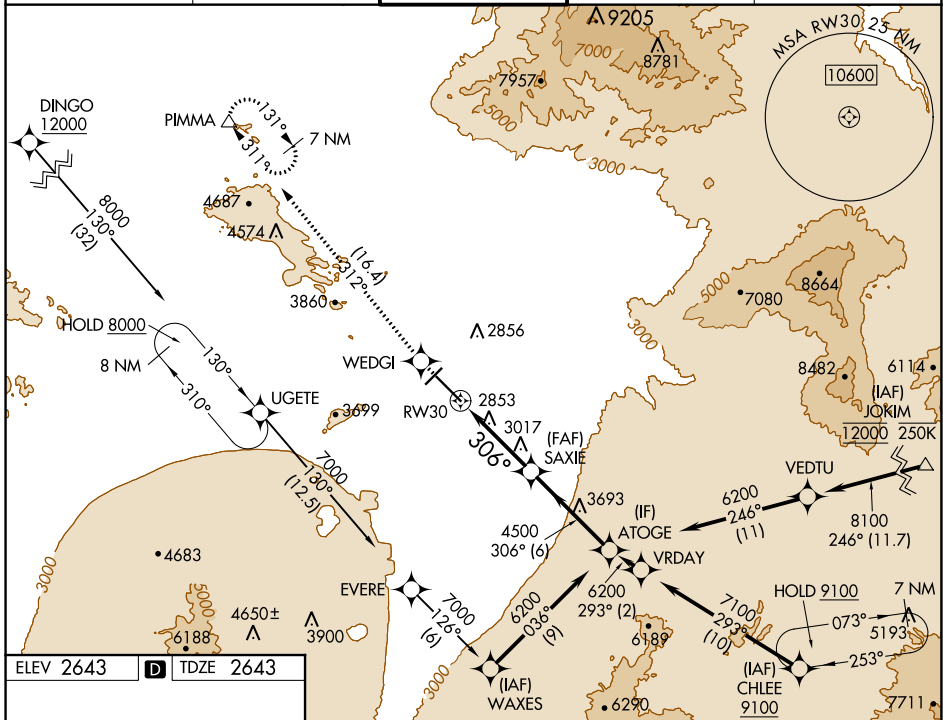
WAAS CH 45746 W30A	APP CRS 306°	Rwy ldg TDZE Apt Elev	10996 2643 2643
--	------------------------	-----------------------------	--

RNAV (GPS) Z RWY 30

TUCSON INTL (TUS)

RNP APCH - GPS.	MISSED APPROACH: Climb to 6800 direct WEDGI and on track 312° to PIMMA and hold.
▼ For uncompensated Baro-VNAV systems, LNAV/VNAV NA below -2°C or above 54°C.	

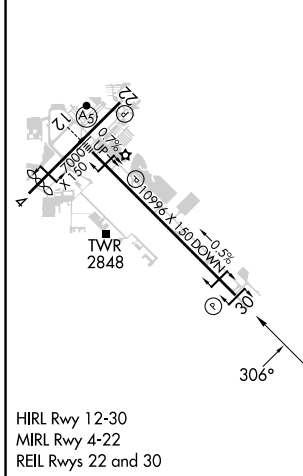
ATIS 123.8 279.65	TUCSON APP CON 119.4 318.1	TUCSON TOWER 118.3 257.8	GND CON 120.025 348.6	CLNC DEL 126.65 326.2
-----------------------------	--------------------------------------	------------------------------------	---------------------------------	---------------------------------



SW-4, 16 MAY 2024 to 13 JUN 2024

SW-4, 16 MAY 2024 to 13 JUN 2024

ELEV 2643	D	TDZE 2643
-----------	----------	-----------



HIRL Rwy 12-30
MIRL Rwy 4-22
REIL Rws 22 and 30

6800	WEDGI	tr 312°	PIMMA	VGSI and RNAV glidepath not coincident (VGSI Angle 3.00/TCH 81).	ATOGE
				SAXIE	
				4500	6200
				1.7 NM to RW30	
				1.7 NM	3.6 NM
				6 NM	
					GP 3.18° TCH 53
CATEGORY	A	B	C	D	
LPV DA		2929-7/8	286 (300-7/8)		
LNAV/VNAV DA		3029-1 1/8	386 (400-1 1/8)		
LNAV MDA	3280-1	637 (700-1)	3280-1 3/4	637 (700-1 3/4)	
CIRCLING	3300-1	657 (700-1)	3300-1 3/4	3640-3	997 (1000-3)