

BURRO FIVE DEPARTURE (RNAV)

AL-430 (FAA)

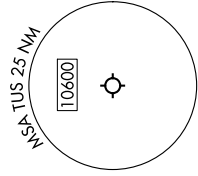
TUCSON INTL (TUS)
TUCSON, ARIZONA

TUCSON DEP CON
125.1 269.55
ATIS
123.8 279.65
CLNC DEL
126.65 326.2
GND CON
120.025 348.6
TUCSON TOWER
118.3 257.8

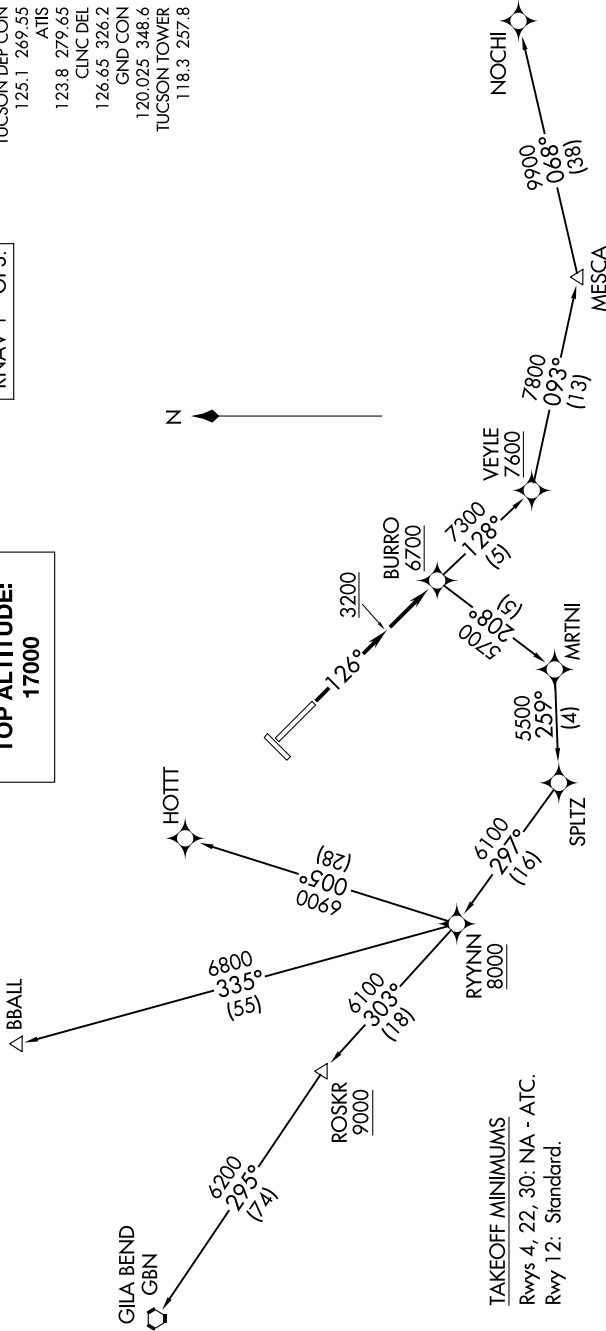
RNAV 1 - GPS.

**TOP ALTITUDE:
17000**

SW-4, 16 MAY 2024 to 13 JUN 2024



NOTE: Chart not to scale.



TAKEOFF MINIMUMS
Rwys 4, 22, 30: NA - ATC.
Rwy 12: Standard.

DEPARTURE ROUTE DESCRIPTION

TAKEOFF RUNWAY 12: Climb heading 126° to 3200, then continue climb direct BURRO, cross BURRO at or above 6700, thence. . . .
 . . . on assigned transition, maintain 17000, expect filed altitude 10 minutes after departure.

- BBALL TRANSITION (BURRO5.BBALL)**
- GILA BEND TRANSITION (BURRO5.GBN)**
- HOTT TRANSITION (BURRO5.HOTT)**
- NOCHI TRANSITION (BURRO5.NOCHI)**

SW-4, 16 MAY 2024 to 13 JUN 2024

BURRO FIVE DEPARTURE (RNAV)