

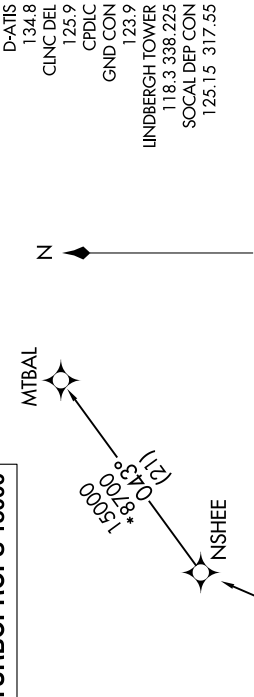
(ZZ0003.ZZ000) 22195

# ZZ000 THREE DEPARTURE (RNAV) AL-373 (FAA)

SAN DIEGO INTL (SAN)  
SAN DIEGO, CALIFORNIA

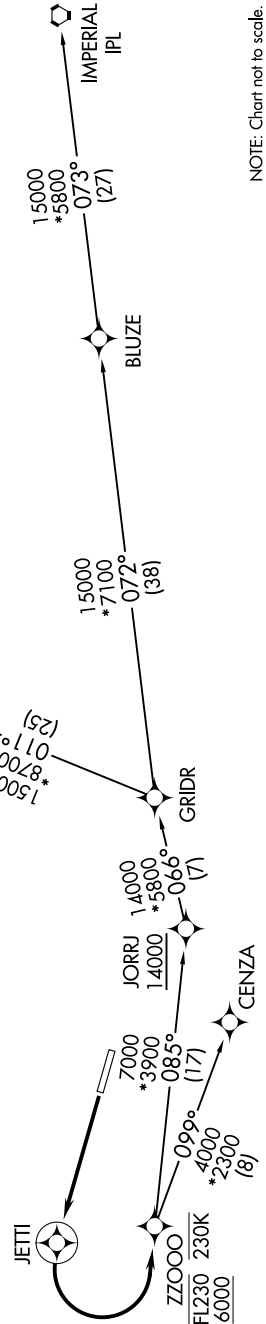
SW-3, 16 MAY 2024 to 13 JUN 2024

<p><b>DEPARTURE ROUTE DESCRIPTION</b></p> <p><b>TAKEOFF RUNWAY 27:</b> Climb direct JETI, then left turn direct to cross ZZ000 between 6000 and FL230 at or below 230K, thence . . . .</p> <p>. . . . on (transition). Turbojets maintain FL230, turboprops maintain 15000, expect filed altitude 10 minutes after departure.</p> <p><u>CENZA TRANSITION (ZZ0003.CENZA)</u></p> <p><u>IMPERIAL TRANSITION (ZZ0003.IPL)</u></p> <p><u>MTBAL TRANSITION (ZZ0003.MTBAL)</u></p>	<p><b>TOP ALTITUDE:</b> <b>JETS FL230/ TURBOPROPS 15000</b></p>	<p>RNAV 1 - DME/DME/IRU or GPS. RADAR required for non-GPS equipped aircraft.</p>
--	---	---



**TAKEOFF MINIMUMS**  
Rwy 9: NA-ATC.  
Rwy 27: Standard with minimum climb of 500' per NM to 520.

NOTE: For non-GPS equipped aircraft using MTBAL or IPL Transitions, PGY DME must be operational.



NOTE: Chart not to scale.

SW-3, 16 MAY 2024 to 13 JUN 2024

# ZZ000 THREE DEPARTURE (RNAV) (ZZ0003.ZZ000) 14JUL22

SAN DIEGO, CALIFORNIA  
SAN DIEGO INTL (SAN)