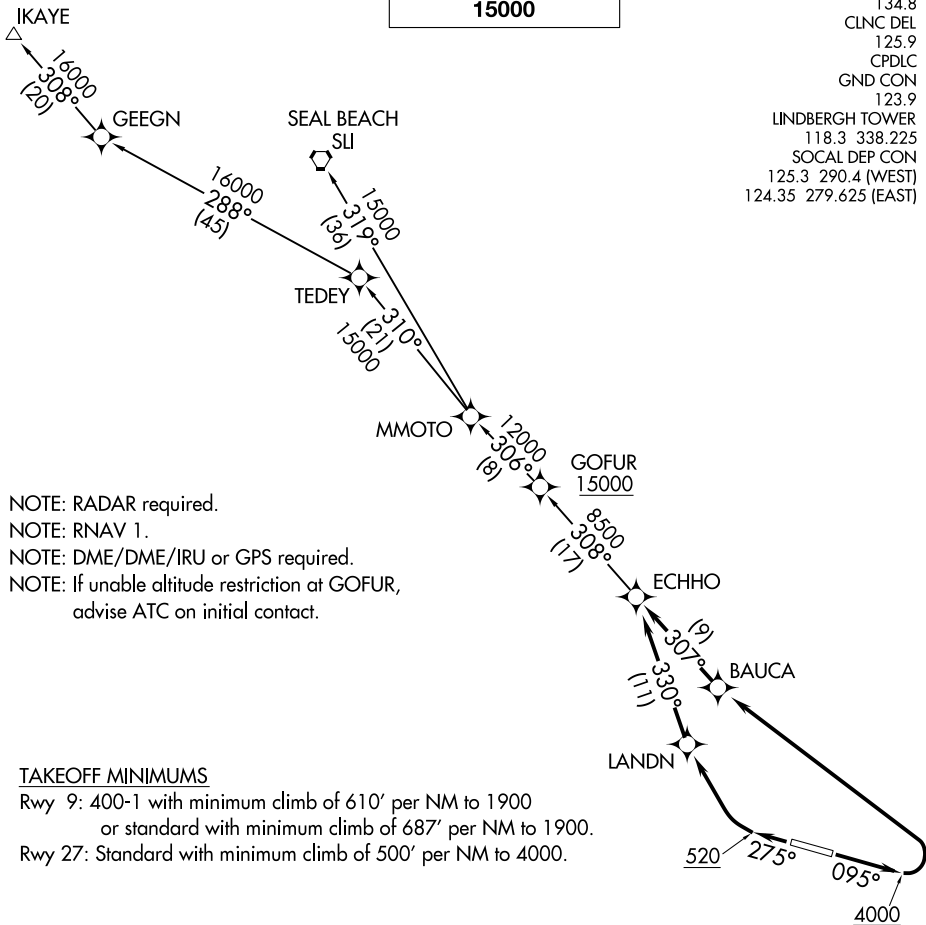


**TOP ALTITUDE:
15000**

D-ATIS
134.8
CLNC DEL
125.9
CPDLC
GND CON
123.9
LINDBERGH TOWER
118.3 338.225
SOCAL DEP CON
125.3 290.4 (WEST)
124.35 279.625 (EAST)



NOTE: RADAR required.
NOTE: RNAV 1.
NOTE: DME/DME/IRU or GPS required.
NOTE: If unable altitude restriction at GOFUR,
advise ATC on initial contact.

TAKEOFF MINIMUMS

Rwy 9: 400-1 with minimum climb of 610' per NM to 1900
or standard with minimum climb of 687' per NM to 1900.
Rwy 27: Standard with minimum climb of 500' per NM to 4000.

NOTE: Chart not to scale.

DEPARTURE ROUTE DESCRIPTION

TAKEOFF RUNWAY 9: Climb heading 095° to 4000, then left turn direct BAUCA, then on track 307° to ECHHO, thence. . . .

TAKEOFF RUNWAY 27: Climb heading 275° to 520, then right turn direct LANDN, then on track 330° to ECHHO, thence. . . .

. . . .on (transition), maintain 15000. Expect filed altitude 10 minutes after departure.

IKAYE TRANSITION (ECHHO2.IKAYE)

SEAL BEACH TRANSITION (ECHHO2.SIU)