


WAAS CH 86411 W28A	APP CRS 280°	Rwy ldg TDZE Apt Elev	5802 550 559
--	------------------------	-----------------------------	---

RNAV (GPS) RWY 28

FREDERICK DOUGLASS/GREATER ROCHESTER INTL (ROC)

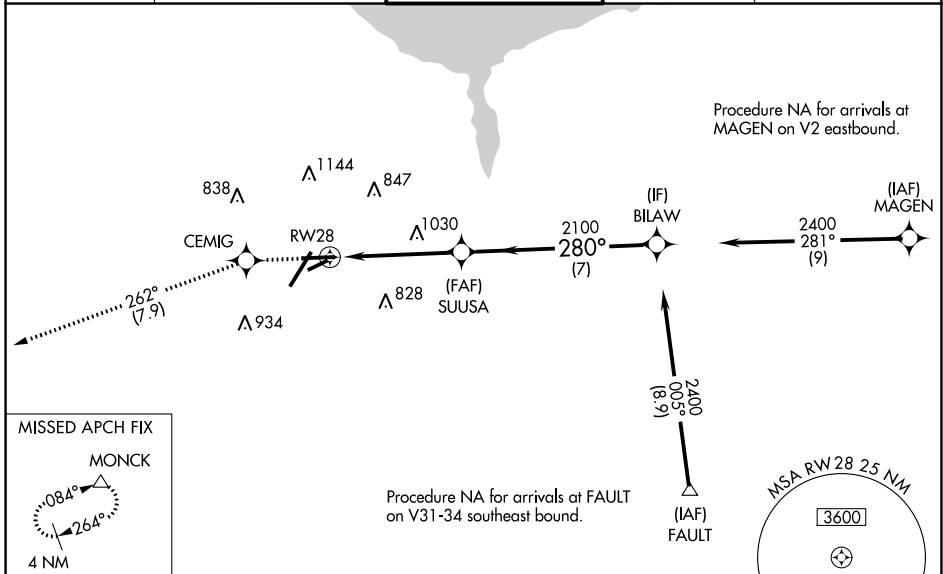
▼ For uncompensated Baro-VNAV systems, LNAV/VNAV NA below -18°C (0°F) or above 54°C (130°F).
▲ DME/DME RNP -0.3 NA.
 Multiple unshielded lights in final approach area.
 For inop MALSR, increase LPV Cats A/B visibility to RVR 5500 and Cats C/D visibility to 2.
 Helicopter visibility reduction below RVR 4000 NA.

MALSR

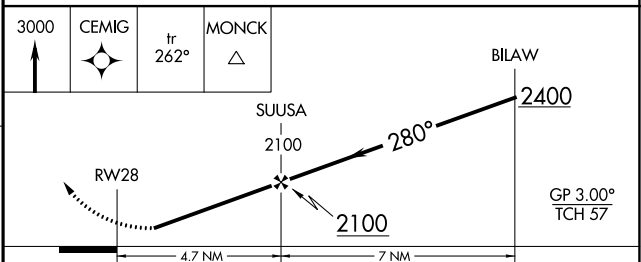
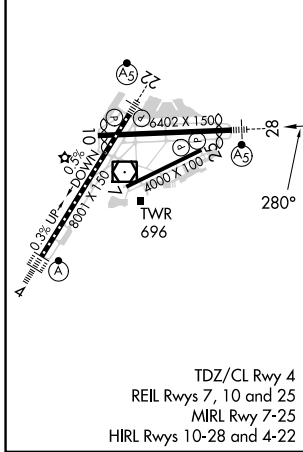


MISSED APPROACH:
Climb to 3000 direct CEMIG and on track 262° to MONCK and hold.

ATIS 124.825	ROCHESTER APP CON 119.55 269.6	ROCHESTER TOWER 118.3 254.3	GND CON 121.7	CLNC DEL 118.8 343.65
------------------------	--	---------------------------------------	-------------------------	---------------------------------



ELEV 559	D	TDZE 550
----------	----------	----------



CATEGORY	A	B	C	D
LPV DA		820/40	270 (300-¾)	
LNAV/VNAV DA		1067-1¼	517 (500-1¼)	
LNAV MDA	1280/40	730 (800-¾)	1280-15 ⁶ / ₈	730 (800-15 ⁶ / ₈)
C CIRCLING	1280-1	721 (800-1)	1500-2¾ 941 (1000-2¾)	1500-3 941 (1000-3)

RNAV (GPS) RWY 28

NE-2, 16 MAY 2024 to 13 JUN 2024

NE-2, 16 MAY 2024 to 13 JUN 2024