

WAAS CH <b>73016</b> <b>W22A</b>	APP CRS <b>224°</b>	Rwy Idg TDZE <b>559</b> Apt Elev <b>559</b>
--	------------------------	---

# RNAV (GPS) RWY 22

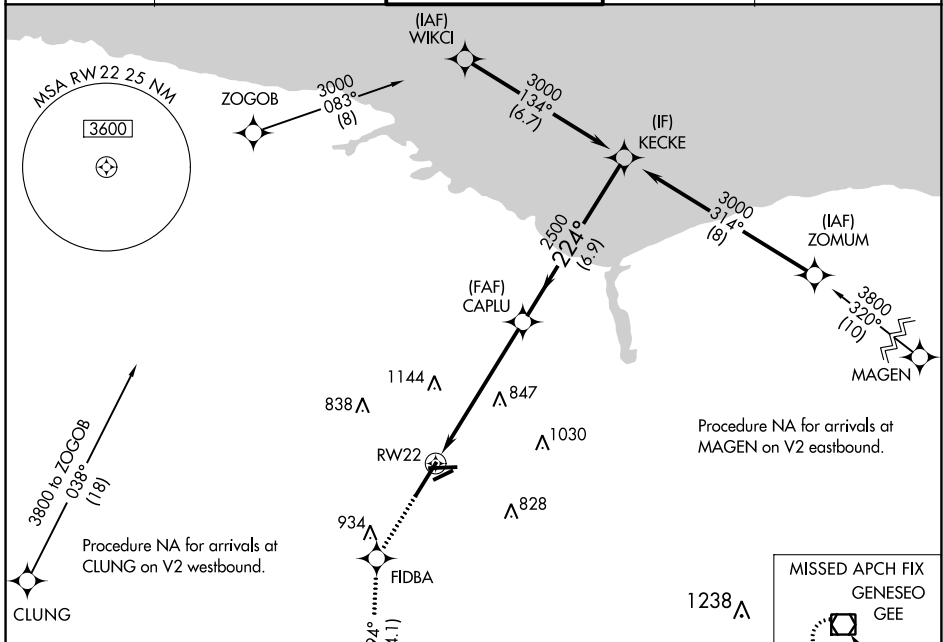
FREDERICK DOUGLASS/GREATER ROCHESTER INTL (ROC)

**⚠** For uncompensated Baro-VNAV systems, LNAV/VNAV NA below -18°C (0°F) or above 54°C (130°F), DME/DME RNP-0,3 NA.  
**\*\*RVR 1800 authorized with use of FD or AP or HUD to DA.**

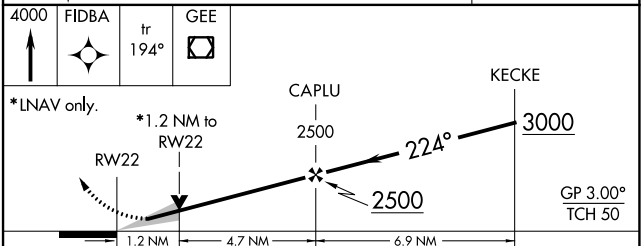
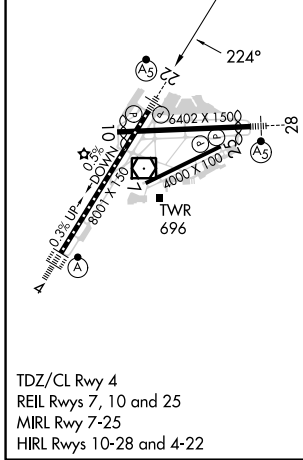
**MALSR**

**MISSED APPROACH:** Climb to 4000 direct FIDBA and on track 194° to GEE VOR/DME and hold.

ATIS <b>124.825</b>	ROCHESTER APP CON <b>119.55 269.6</b>	ROCHESTER TOWER <b>118.3 254.3</b>	GND CON <b>121.7</b>	CLNC DEL <b>118.8 343.65</b>
------------------------	--	---------------------------------------	-------------------------	---------------------------------



ELEV 559	<b>D</b>	TDZE 559
----------	----------	----------



CATEGORY	A	B	C	D
LPV DA		**759/24	200 (200-½)	
LNAV/VNAV DA		859/25	300 (300-½)	
LNAV MDA	980/24	421 (500-½)	980/40	421 (500-¾)
<b>C</b> CIRCLING	1060-1	501 (600-1)	1500-2¾ 941 (1000-2¾)	1500-3 941 (1000-3)

NE-2, 16 MAY 2024 to 13 JUN 2024

NE-2, 16 MAY 2024 to 13 JUN 2024