

LOC I-MWD <b>110.7</b>	APP CRS <b>224°</b>	Rwy Idg <b>8001</b>
		TZDE <b>559</b>
		Apt Elev <b>559</b>

# ILS or LOC RWY 22

FREDERICK DOUGLASS/GREATER ROCHESTER INTL (ROC)

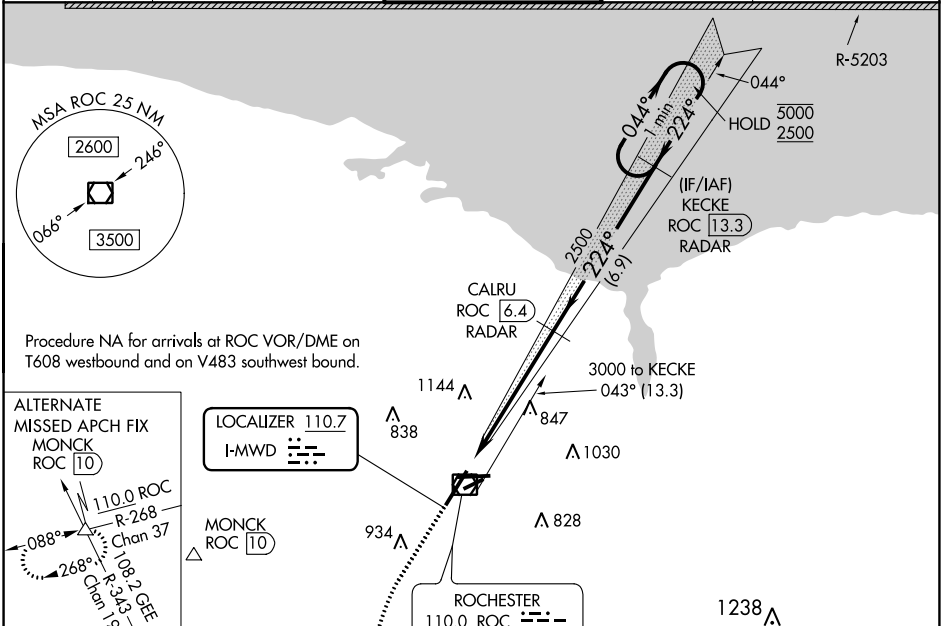
DME or RADAR required.

**▼** When R-5203 active hold in lieu NA. DME from ROC VOR/DME.  
**▲** DME use requires simultaneous reception of I-MWD and ROC DME.  
 \* RVR 1800 authorized with use of FD or AP or HUD to DA.

MALSR

MISSED APPROACH: Climb to 1000 then climbing left turn to 4000 direct GEE VOR/DME and hold.

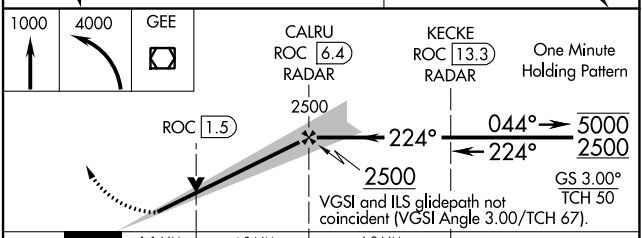
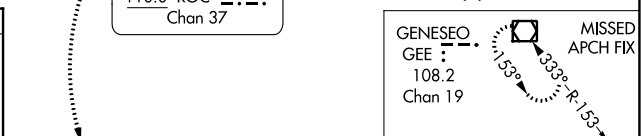
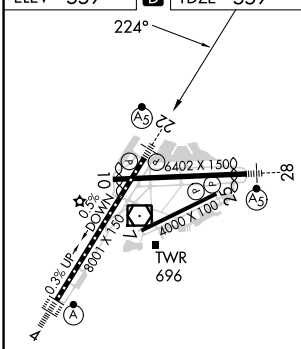
ATIS <b>124.825</b>	ROCHESTER APP CON <b>119.55 269.6</b>	ROCHESTER TOWER <b>118.3 254.3</b>	GND CON <b>121.7</b>	CLNC DEL <b>118.8 343.65</b>
------------------------	--	---------------------------------------	-------------------------	---------------------------------



NE-2, 16 MAY 2024 to 13 JUN 2024

NE-2, 16 MAY 2024 to 13 JUN 2024

ELEV 559	<b>D</b>	TZDE 559
----------	----------	----------



FAF to MAP 5.9 NM					
Knots	60	90	120	150	180
Min:Sec	5:54	3:56	2:57	2:22	1:58
CATEGORY	A	B	C	D	
S-ILS 22 *	759/24 200 (200-½)				
S-LOC 22	980/24	421 (500-½)	980/40	421 (500-¾)	
CIRCLING	1060-1	501 (600-1)	1460-2¾ 901 (1000-2¾)	1460-3 901 (1000-3)	