

WAAS CH 45804 W07A	APP CRS 069°	Rwy ldg 6830 TDZE 1744 Apt Elev 1744
--	------------------------	---

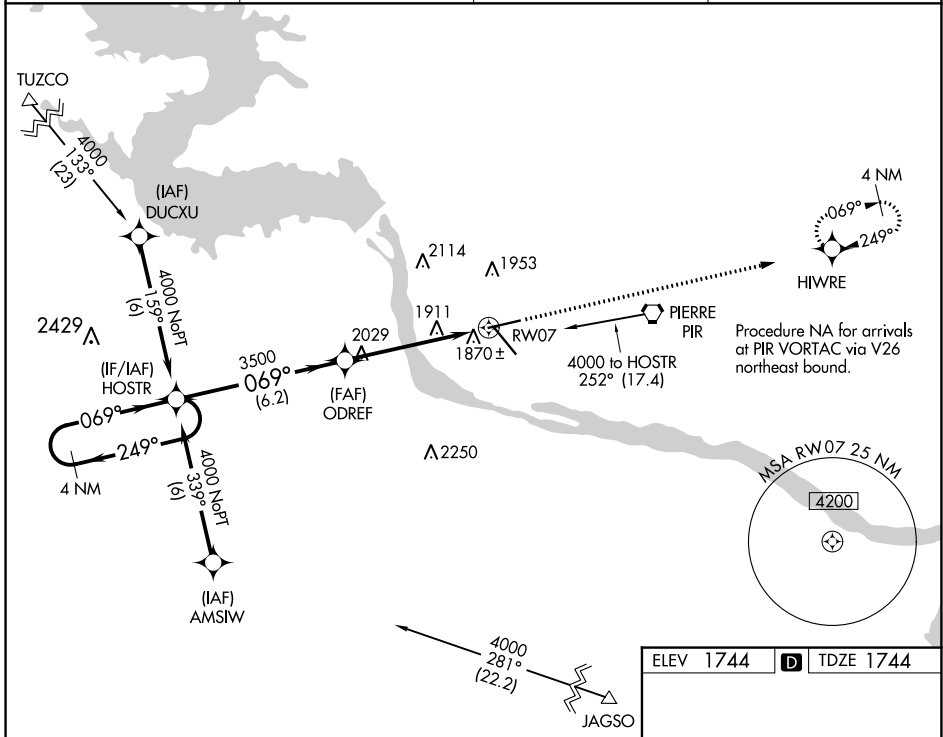
RNAV (GPS) RWY 7

PIERRE RGNL (PIR)

⚠ For uncompensated Baro-VNAV systems, LNAV/VNAV NA below -18°C (0°F) or above 45°C (113°F). DME/DME RNP-0.3 NA. Visibility reduction by helicopters NA.

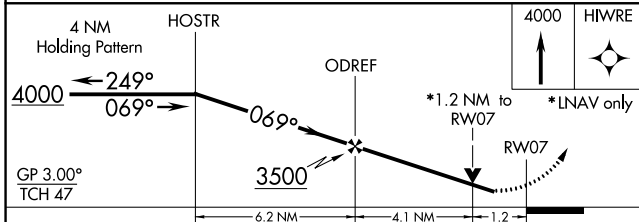
MISSED APPROACH: Climb to 4000 direct HIWRE and hold.

ASOS 119.025	MINNEAPOLIS CENTER 125.1 269.1	CTAF 122.7	UNICOM 122.95
------------------------	--	----------------------	-------------------------

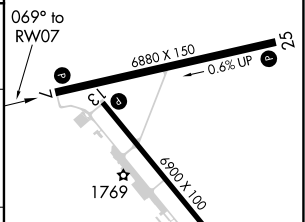


NC-1, 16 MAY 2024 to 13 JUN 2024

NC-1, 16 MAY 2024 to 13 JUN 2024



ELEV 1744	D TDZE 1744
-----------	--------------------



CATEGORY	A	B	C	D
LPV DA	2057-1 313 (400-1)			
LNAV/VNAV DA	2170-1½ 426 (500-1½)			
LNAV MDA	2180-1	436 (500-1)	2180-1¼ 436 (500-1¼)	2180-1½ 436 (500-1½)
C CIRCLING	2240-1 496 (500-1)	2300-1 556 (600-1)	2400-1¾ 656 (700-1¾)	2460-2¼ 716 (800-2¼)

REIL Rwy 7, 13, and 25 **Ⓛ**
HIRL Rwy 7-25 and 13-31 **Ⓛ**