

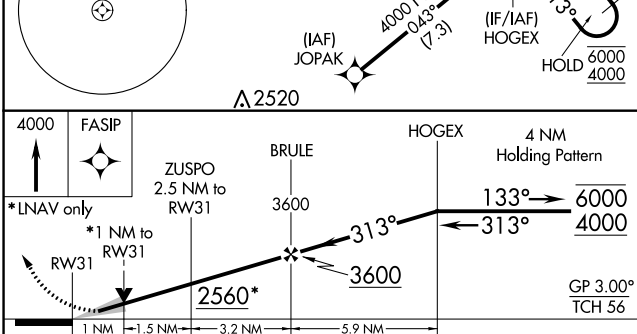
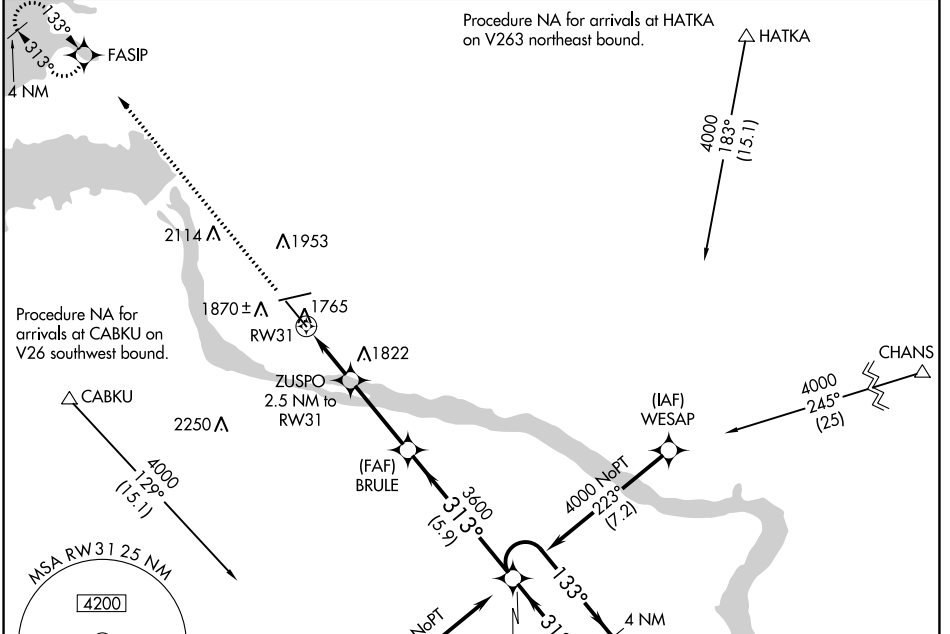
WAAS CH 65623 W31A	APP CRS 313°	Rwy Idg TDZE 1720 Apt Elev 1744
--	------------------------	---

RNAV (GPS) RWY 31

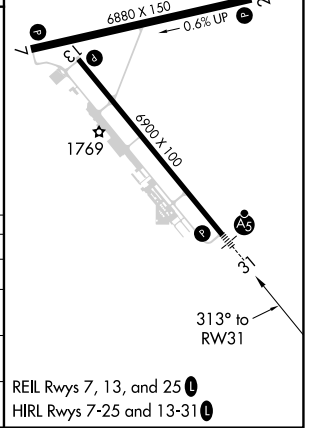
PIERRE RGNL (PIR)

RNP APCH.	MALSR	MISSED APPROACH: Climb to 4000 direct FASIP and hold.
<p>▼ For uncompensated Baro-VNAV systems, LNAV/VNAV NA below -26°C or above 54°C. For inop ALS, increase LNAV/VNAV all Cats visibility to ¾ SM.</p>		

ASOS 119.025	MINNEAPOLIS CENTER 125.1 269.1	CTAF 122.7	UNICOM 122.95
------------------------	--	----------------------	-------------------------



ELEV 1744	TDZE 1720
-----------	-----------



CATEGORY	A	B	C	D
LPV DA		1920-½	200 (200-½)	
LNAV/VNAV DA		1970-½	250 (300-½)	
LNAV MDA		2020-½	300 (300-½)	
CIRCLING	2240-1 496 (500-1)	2300-1 556 (600-1)	2400-1¾ 656 (700-1¾)	2460-2¼ 716 (800-2¼)

NC-1, 16 MAY 2024 to 13 JUN 2024

NC-1, 16 MAY 2024 to 13 JUN 2024