

WAAS CH <b>65601</b> <b>W09A</b>	APP CRS <b>094°</b>	Rwy Idg TDZE <b>33</b> Apt Elev <b>33</b>	<b>6000</b>
--	------------------------	---	-------------

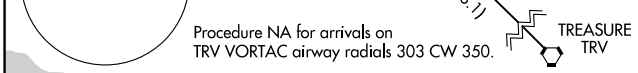
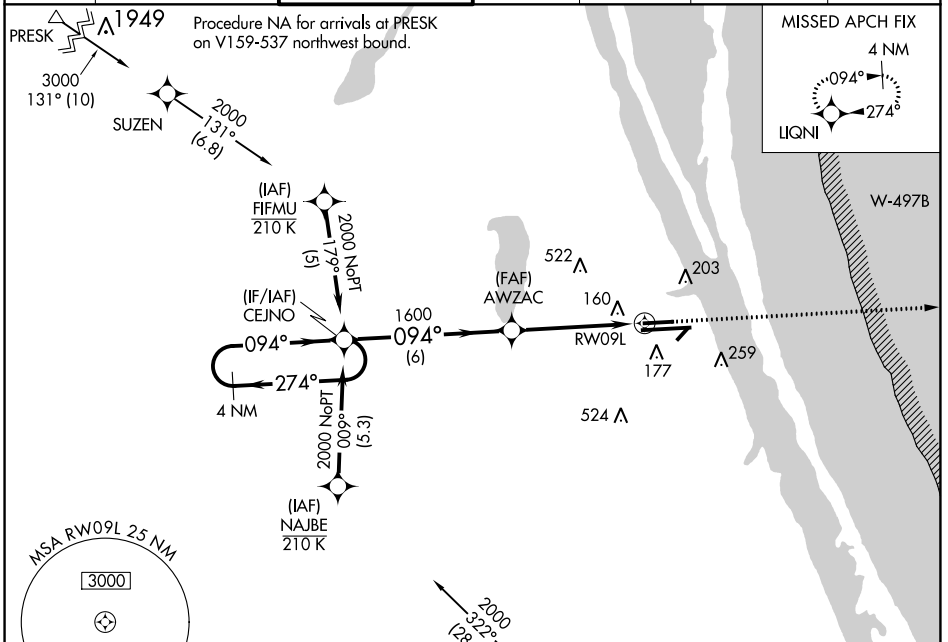
# RNAV (GPS) RWY 9L

MELBOURNE ORLANDO INTL (MLB)

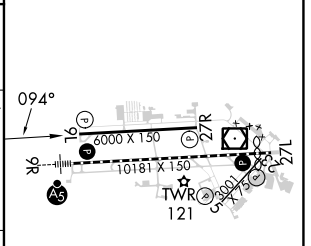
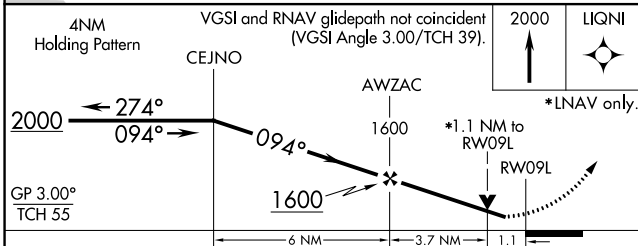
RNP APCH. MISSED APPROACH: Climb to 2000 direct LIQNI and hold.

For uncompensated Baro-VNAV systems, LNAV/VNAV NA below -1.5°C (5°F) or above 54°C (130°F). Helicopter visibility reduction below 3/4 SM NA.

ATIS <b>132.55</b>	ORLANDO APP CON <b>132.65 281.425</b>	MELBOURNE TOWER * <b>118.2 (CTAF) 257.8</b>	GND CON <b>121.9</b>	CLNC DEL <b>121.9</b>	CLNC DEL <b>132.65</b> (When twr closed)	UNICOM <b>122.95</b>
-----------------------	--	--	-------------------------	--------------------------	--	-------------------------



ELEV 33	TDZE 33
---------	---------



CATEGORY	A	B	C	D
LPV DA		283-3/4	250 (300-3/4)	
LNAV/VNAV DA		467-13/8	434 (500-13/8)	
LNAV MDA	420-1	387 (400-1)	420-1 1/8	387 (400-1 1/8)
CIRCLING	500-1 467 (500-1)	560-1 527 (600-1)	680-1 3/4 647 (700-1 3/4)	880-2 3/4 847 (900-2 3/4)

SE-3, 16 MAY 2024 to 13 JUN 2024

SE-3, 16 MAY 2024 to 13 JUN 2024