

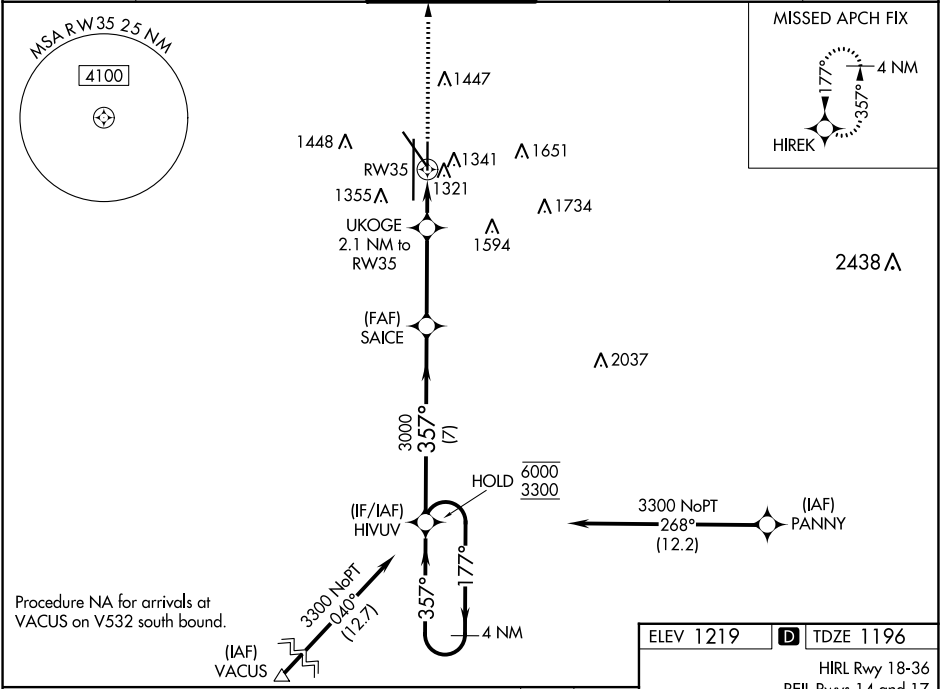
WAAS CH 45637 W35A	APP CRS 357°	Rwy Idg TDZE 1196 Apt Elev 1219	5800
--	------------------------	---	-------------

RNAV (GPS) RWY 35

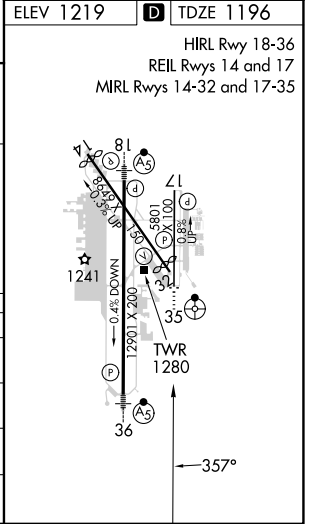
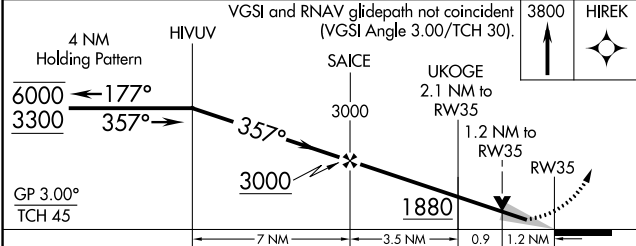
LINCOLN (LNK)

RNP APCH - GPS.		LINCOLN TOWER* 118.5 (CTAF) 253.5		GND CON 121.9 275.8	CLNC DEL 120.7 225.4	UNICOM 122.95
⚠ For uncompensated Baro-VNAV systems, LNAV/VNAV NA below -25°C or above 54°C.				ODALS	MISSED APPROACH: Climb to 3800 direct HIREK and hold.	

ATIS 118.05 290.9	OMAHA APP CON 124.0 270.3	LINCOLN TOWER* 118.5 (CTAF) 253.5	GND CON 121.9 275.8	CLNC DEL 120.7 225.4	UNICOM 122.95
-----------------------------	-------------------------------------	---	-------------------------------	--------------------------------	-------------------------



Procedure NA for arrivals at VACUS on V532 south bound.



CATEGORY	A	B	C	D
LPV DA	1446-3/4		250 (300-3/4)	
LNAV/VNAV DA	1534-1		338 (400-1)	
LNAV MDA	1580-3/4		1580-1	
	384 (400-3/4)		384 (400-1)	
CIRCLING	1680-1		1820-1 3/4	
	461 (500-1)		601 (700-1 3/4)	
	1760-1		1960-2 1/2	
	541 (600-1)		741 (800-2 1/2)	

NC-2, 16 MAY 2024 to 13 JUN 2024

NC-2, 16 MAY 2024 to 13 JUN 2024