

LINCOLN, NEBRASKA

HI-VOR/DME or TACAN RWY 36

VORTAC LNK 116.1 Chan 108	APCH CRS 360°	Rwy ldg 12,901 TDZE 1175 Arprt Elev 1219
---	-------------------------	---

AL-232 [USAF]

LINCOLN (KLNK)

RADAR required.

MALSR

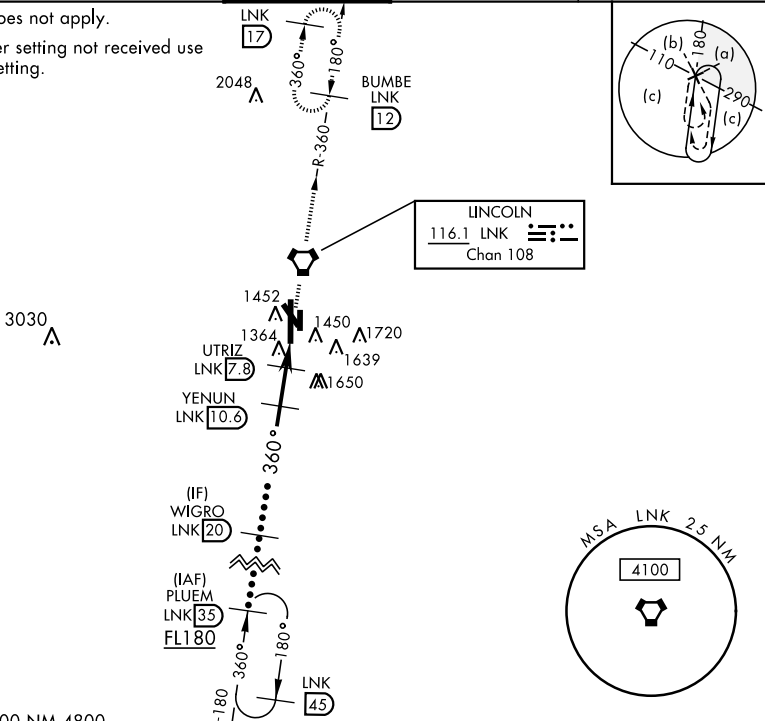
MISSED APPROACH: Climb to 3000 direct LNK VORTAC then via LNK R-360 to BUMBE 12 DME and hold.

★ When ALS inop, increase CAT E vis to 1 $\frac{3}{8}$ miles.
★★ When ALS inop, increase CAT CDE vis to 1 $\frac{1}{8}$ miles.

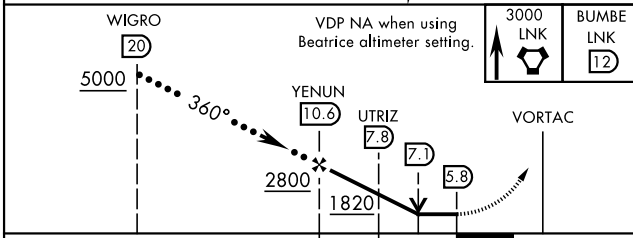
ATIS 118.05 290.9	OMAHA APP CON 124.0 270.3	TOWER ★ 118.5 253.5	GND CON 121.9 275.8	CLNC DEL 120.7 225.4
-----------------------------	-------------------------------------	-------------------------------	-------------------------------	--------------------------------

Inoperative table does not apply.

When local altimeter setting not received use Beatrice altimeter setting.

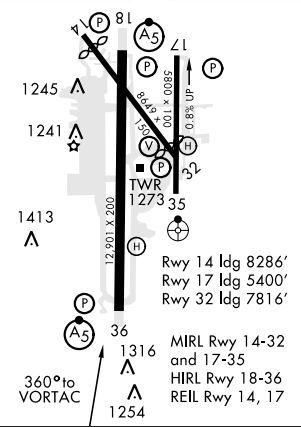


EMERG SAFE ALT 100 NM 4800



ELEV 1219	D	TDZE 1175
-----------	---	-----------

CATEGORY	C	D	E
S-36 *	1620- $\frac{7}{8}$	445	(500- $\frac{7}{8}$)
CIRCLING	1760-1 $\frac{1}{2}$ 541 (600-1 $\frac{1}{2}$)	1820-2 601 (700-2)	2040-3 821 (900-3)
BEATRICE ALTIMETER SETTING			
S-36 **	1720-1 $\frac{1}{8}$	545	(600-1 $\frac{1}{8}$)
CIRCLING	1860-1 $\frac{1}{2}$ 641 (700-1 $\frac{1}{2}$)	1920-2 $\frac{1}{4}$ 701 (800-2 $\frac{1}{4}$)	2140-3 $\frac{1}{4}$ 921 (1000-3 $\frac{1}{4}$)



LINCOLN, NEBRASKA

40°51'N-96°46'W

LINCOLN (KLNK)

Amtd 5 08MAR12

HI-VOR/DME or TACAN RWY 36

NC-2, 16 MAY 2024 to 13 JUN 2024

NC-2, 16 MAY 2024 to 13 JUN 2024